

SCHEMATIC DIAGRAM

20 SIMS DRIVE (S)387395

FLOOR	UNIT	01	02	03	04	05	06	07	08	09
18		#18-01 (2)a	#18-02 (3)f	#18-03 (4)a	#18-04 (1)b	#18-05 (1)a	#18-06 (2+1)a	#18-07 (3+1)a	#18-08 (3)b	#18-09 (2)a
17		#17-01 (2)a	#17-02 (3)f	#17-03 (4)a	#17-04 (1)b	#17-05 (1)a	#17-06 (2+1)a	#17-07 (3+1)a	#17-08 (3)b	#17-09 (2)a
16		#16-01 (2)a	#16-02 (3)f	#16-03 (4)a	#16-04 (1)b	#16-05 (1)a	#16-06 (2+1)a	#16-07 (3+1)a	#16-08 (3)b	#16-09 (2)a
15		#15-01 (2)a	#15-02 (3)f	#15-03 (4)a	#15-04 (1)b	#15-05 (1)a	#15-06 (2+1)a	#15-07 (3+1)a	#15-08 (3)b	#15-09 (2)a
14		#14-01 (2)a	#14-02 (3)f	#14-03 (4)a	#14-04 (1)b	#14-05 (1)a	#14-06 (2+1)a	#14-07 (3+1)a	#14-08 (3)b	#14-09 (2)a
13		#13-01 (2)a	#13-02 (3)f	#13-03 (4)a	#13-04 (1)b	#13-05 (1)a	#13-06 (2+1)a	#13-07 (3+1)a	#13-08 (3)b	#13-09 (2)a
12		#12-01 (2)a	#12-02 (3)f	#12-03 (4)a	#12-04 (1)b	#12-05 (1)a	#12-06 (2+1)a	#12-07 (3+1)a	#12-08 (3)b	#12-09 (2)a
11		#11-01 (2)a	#11-02 (3)f	#11-03 (4)a	#11-04 (1)b	#11-05 (1)a	#11-06 (2+1)a	#11-07 (3+1)a	#11-08 (3)b	#11-09 (2)a
10		#10-01 (2)a	#10-02 (3)f	#10-03 (4)a	#10-04 (1)b	#10-05 (1)a	#10-06 (2+1)a	#10-07 (3+1)a	#10-08 (3)b	#10-09 (2)a
9		#09-01 (2)a	#09-02 (3)f	#09-03 (4)a	#09-04 (1)b	#09-05 (1)a	#09-06 (2+1)a	#09-07 (3+1)a	#09-08 (3)b	#09-09 (2)a
8		#08-01 (2)a	#08-02 (3)f	#08-03 (4)a	#08-04 (1)b	#08-05 (1)a	#08-06 (2+1)a	#08-07 (3+1)a	#08-08 (3)b	#08-09 (2)a
7		#07-01 (2)a	#07-02 (3)f	#07-03 (4)a	#07-04 (1)b	#07-05 (1)a	#07-06 (2+1)a	#07-07 (3+1)a	#07-08 (3)b	#07-09 (2)a
6		#06-01 (2)a	#06-02 (3)f	#06-03 (4)a	#06-04 (1)b	#06-05 (1)a	#06-06 (2+1)a	#06-07 (3+1)a	#06-08 (3)b	#06-09 (2)a
5		#05-01 (2)a	#05-02 (3)f	#05-03 (4)a	#05-04 (1)b	#05-05 (1)a	#05-06 (2+1)a	#05-07 (3+1)a	#05-08 (3)b	#05-09 (1)d
4		Carpark		#04-03 (4)a	#04-04 (1)b	#04-05 (1)a	#04-06 (2+1)a	#04-07 (3+1)a	Carpark	
3		Carpark		#03-03 (4)a	#03-04 (1)b	#03-05 (1)a	#03-06 (2+1)a	#03-07 (3+1)a	Carpark	
2		Carpark		#02-03 (4)a	#02-04 (1)b	#02-05 (1)a	#02-06 (2+1)a	#02-07 (3+1)a	Carpark	
1		Carpark		#01-03 (4)a	#01-04 (1)b	#01-05 (1)a	#01-06 (1+1)a	#01-07 (3+1)a	Carpark	
B1		Lobby Carpark								

26 SIMS DRIVE (S)387398

FLOOR	UNIT	20	21	22	23
18		#18-20 (3+1)b	#18-21 (3Y)c	#18-22 (3Y)b	#18-23 (3Y)b
17		#17-20 (3+1)b	#17-21 (3Y)c	#17-22 (3Y)b	#17-23 (3Y)b
16		#16-20 (3+1)b	#16-21 (3Y)c	#16-22 (3Y)b	#16-23 (3Y)b
15		#15-20 (3+1)b	#15-21 (3Y)c	#15-22 (3Y)b	#15-23 (3Y)b
14		#14-20 (3+1)b	#14-21 (3Y)c	#14-22 (3Y)b	#14-23 (3Y)b
13		#13-20 (3+1)b	#13-21 (3Y)c	#13-22 (3Y)b	#13-23 (3Y)b
12		#12-20 (3+1)b	#12-21 (3Y)c	#12-22 (3Y)b	#12-23 (3Y)b
11		#11-20 (3+1)b	#11-21 (3Y)c	#11-22 (3Y)b	#11-23 (3Y)b
10		#10-20 (3+1)b	#10-21 (3Y)c	#10-22 (3Y)b	#10-23 (3Y)b
9		#09-20 (3+1)b	#09-21 (3Y)c	#09-22 (3Y)b	#09-23 (3Y)b
8		#08-20 (3+1)b	#08-21 (3Y)c	#08-22 (3Y)b	#08-23 (3Y)b
7		#07-20 (3+1)b	#07-21 (3Y)c	#07-22 (3Y)b	#07-23 (3Y)b
6		#06-20 (3+1)b	#06-21 (3Y)c	#06-22 (3Y)b	#06-23 (3Y)b
5		#05-20 (3+1)b	#05-21 (3Y)c	#05-22 (3Y)b	#05-23 (3Y)b
4		#04-20 (3+1)b	#04-21 (3Y)c	#04-22 (3Y)b	#04-23 (3Y)b
3		#03-20 (3+1)b	#03-21 (3Y)c	#03-22 (3Y)b	#03-23 (3Y)b
2		#02-20 (3+1)b	#02-21 (3Y)c	#02-22 (3Y)b	#02-23 (3Y)b
1		#01-20 (3+1)b	#01-21 (3Y)c	#01-22 (3Y)b	#01-23 (3Y)b
B1		Lobby Carpark			

28 SIMS DRIVE (S)387399

FLOOR	UNIT	24	25	26	27
18		#18-24 (3+1)c	#18-25 (3Y)b	#18-26 (3Y)e	#18-27 (4)b
17		#17-24 (3+1)c	#17-25 (3Y)b	#17-26 (3Y)e	#17-27 (4)b
16		#16-24 (3+1)c	#16-25 (3Y)b	#16-26 (3Y)e	#16-27 (4)b
15		#15-24 (3+1)c	#15-25 (3Y)b	#15-26 (3Y)e	#15-27 (4)b
14		#14-24 (3+1)c	#14-25 (3Y)b	#14-26 (3Y)e	#14-27 (4)b
13		#13-24 (3+1)c	#13-25 (3Y)b	#13-26 (3Y)e	#13-27 (4)b
12		#12-24 (3+1)c	#12-25 (3Y)b	#12-26 (3Y)e	#12-27 (4)b
11		#11-24 (3+1)c	#11-25 (3Y)b	#11-26 (3Y)e	#11-27 (4)b
10		#10-24 (3+1)c	#10-25 (3Y)b	#10-26 (3Y)e	#10-27 (4)b
9		#09-24 (3+1)c	#09-25 (3Y)b	#09-26 (3Y)e	#09-27 (4)b
8		#08-24 (3+1)c	#08-25 (3Y)b	#08-26 (3Y)e	#08-27 (4)b
7		#07-24 (3+1)c	#07-25 (3Y)b	#07-26 (3Y)e	#07-27 (4)b
6		#06-24 (3+1)c	#06-25 (3Y)b	#06-26 (3Y)e	#06-27 (4)b
5		#05-24 (3+1)c	#05-25 (3Y)b	#05-26 (3Y)e	#05-27 (4)b
4		#04-24 (3+1)c	#04-25 (3Y)b	#04-26 (3Y)e	#04-27 (4)b
3		#03-24 (3+1)c	#03-25 (3Y)b	#03-26 (3Y)e	#03-27 (4)b
2		#02-24 (3+1)c	#02-25 (3Y)b	#02-26 (3Y)e	#02-27 (4)b
1		#01-24 (3+1)c	#01-25 (3Y)b	#01-26 (3Y)e	#01-27 (4)b
B1		Lobby Carpark			

22 SIMS DRIVE (S)387396

FLOOR	UNIT	10	11	12	13	14	15	16	17	18
18		#18-10 (2)a	#18-11 (3)b	#18-12 (4)a	#18-13 (1)b	#18-14 (2+1)b	#18-15 (2P)a	#18-16 (3Y)a	#18-17 (3)a	#18-18 (2)a
17		#17-10 (2)a	#17-11 (3)b	#17-12 (4)a	#17-13 (1)b	#17-14 (2+1)b	#17-15 (2P)a	#17-16 (3Y)a	#17-17 (3)a	#17-18 (2)a
16		#16-10 (2)a	#16-11 (3)b	#16-12 (4)a	#16-13 (1)b	#16-14 (2+1)b	#16-15 (2P)a	#16-16 (3Y)a	#16-17 (3)a	#16-18 (2)a
15		#15-10 (2)a	#15-11 (3)b	#15-12 (4)a	#15-13 (1)b	#15-14 (2+1)b	#15-15 (2P)a	#15-16 (3Y)a	#15-17 (3)a	#15-18 (2)a
14		#14-10 (2)a	#14-11 (3)b	#14-12 (4)a	#14-13 (1)b	#14-14 (2+1)b	#14-15 (2P)a	#14-16 (3Y)a	#14-17 (3)a	#14-18 (2)a
13		#13-10 (2)a	#13-11 (3)b	#13-12 (4)a	#13-13 (1)b	#13-14 (2+1)b	#13-15 (2P)a	#13-16 (3Y)a	#13-17 (3)a	#13-18 (2)a
12		#12-10 (2)a	#12-11 (3)b	#12-12 (4)a	#12-13 (1)b	#12-14 (2+1)b	#12-15 (2P)a	#12-16 (3Y)a	#12-17 (3)a	#12-18 (2)a
11		#11-10 (2)a	#11-11 (3)b	#11-12 (4)a	#11-13 (1)b	#11-14 (2+1)b	#11-15 (2P)a	#11-16 (3Y)a	#11-17 (3)a	#11-18 (2)a
10		#10-10 (2)a	#10-11 (3)b	#10-12 (4)a	#10-13 (1)b	#10-14 (2+1)b	#10-15 (2P)a	#10-16 (3Y)a	#10-17 (3)a	#10-18 (2)a
9		#09-10 (2)a	#09-11 (3)b	#09-12 (4)a	#09-13 (1)b	#09-14 (2+1)b	#09-15 (2P)a	#09-16 (3Y)a	#09-17 (3)a	#09-18 (2)a
8		#08-10 (2)a	#08-11 (3)b	#08-12 (4)a	#08-13 (1)b	#08-14 (2+1)b	#08-15 (2P)a	#08-16 (3Y)a	#08-17 (3)a	#08-18 (2)a
7		#07-10 (2)a	#07-11 (3)b	#07-12 (4)a	#07-13 (1)b	#07-14 (2+1)b	#07-15 (2P)a	#07-16 (3Y)a	#07-17 (3)a	#07-18 (2)a
6		#06-10 (2)a	#06-11 (3)b	#06-12 (4)a	#06-13 (1)b	#06-14 (2+1)b	#06-15 (2P)a	#06-16 (3Y)a	#06-17 (3)a	#06-18 (2)a
5		#05-10 (2)a	#05-11 (3)b	#05-12 (4)a	#05-13 (1)b	#05-14 (2+1)b	#05-15 (2P)a	#05-16 (3Y)a	#05-17 (3)a	#05-18 (1)d
4		Carpark		#04-12 (4)a	#04-13 (1)b	#04-14 (2+1)b	#04-15 (2P)a	#04-16 (3Y)a	Carpark	
3		Carpark		#03-12 (4)a	#03-13 (1)b	#03-14 (2+1)b	#03-15 (2P)a	#03-16 (3Y)a	Carpark	
2		Carpark		#02-12 (4)a	#02-13 (1)b	#02-14 (2+1)b	#02-15 (2P)a	#02-16 (3Y)a	Carpark	
1		Carpark		#01-12 (4)a	#01-13 (1)b	#01-14 (1+1)b	#01-15 (2P)a	#01-16 (3Y)a	Carpark	
B1		Lobby Carpark								

30 SIMS DRIVE (S)387400

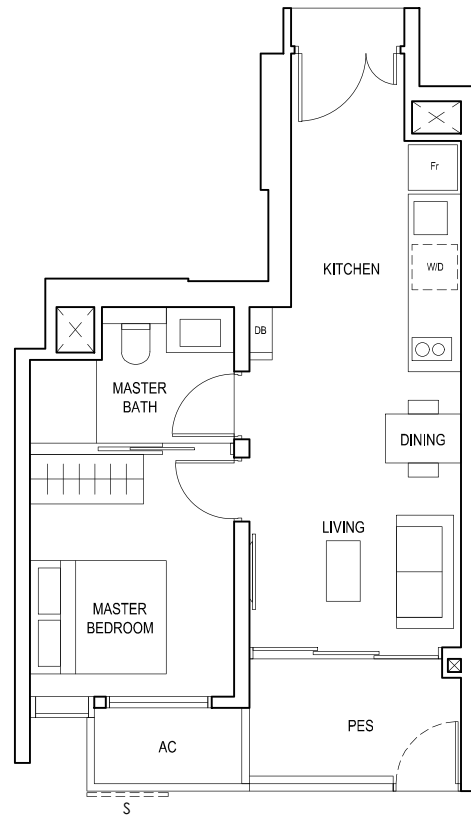
FLOOR	UNIT	28	29	30	31	32	33	34	35	
18		Sky Garden		#18-30 (3)c	#18-31 (2P)b	#18-32 (2P)b	#18-33 (3)d	Sky Garden		
17		#17-28 (2)b	#17-29 (3)e	#17-30 (3)c	#17-31 (2P)b	#17-32 (2P)b	#17-33 (3)d	#17-34 (3Y)d	#17-35 (2P)c	
16		#16-28 (2)b	#16-29 (3)e	#16-30 (3)c	#16-31 (2P)b	#16-32 (2P)b	#16-33 (3)d	#16-34 (3Y)d	#16-35 (2P)c	
15		#15-28 (2)b	#15-29 (3)e	#15-30 (3)c	#15-31 (2P)b	#15-32 (2P)b	#15-33 (3)d	#15-34 (3Y)d	#15-35 (2P)c	
14		#14-28 (2)b	#14-29 (3)e	#14-30 (3)c	#14-31 (2P)b	#14-32 (2P)b	#14-33 (3)d	#14-34 (3Y)d	#14-35 (2P)c	
13		#13-28 (2)b	#13-29 (3)e	#13-30 (3)c	#13-31 (2P)b	#13-32 (2P)b	#13-33 (3)d	#13-34 (3Y)d	#13-35 (2P)c	
12		#12-28 (2)b	#12-29 (3)e	#12-30 (3)c	#12-31 (2P)b	#12-32 (2P)b	#12-33 (3)d	#12-34 (3Y)d	#12-35 (2P)c	
11		#11-28 (2)b	#11-29 (3)e	#11-30 (3)c	#11-31 (2P)b	#11-32 (2P)b	#11-33 (3)d	#11-34 (3Y)d	#11-35 (2P)c	
10		#10-28 (2)b	#10-29 (3)e	#10-30 (3)c	#10-31 (2P)b	#10-32 (2P)b	#10-33 (3)d	#10-34 (3Y)d	#10-35 (2P)c	
9		#09-28 (2)b	#09-29 (3)e	#09-30 (3)c	#09-31 (2P)b	#09-32 (2P)b	#09-33 (3)d	#09-34 (3Y)d	#09-35 (2P)c	
8		#08-28 (2)b	#08-29 (3)e	#08-30 (3)c	#08-31 (2P)b	#08-32 (2P)b	#08-33 (3)d	#08-34 (3Y)d	#08-35 (2P)c	
7		#07-28 (2)b	#07-29 (3)e	#07-30 (3)c	#07-31 (2P)b	#07-32 (2P)b	#07-33 (3)d	#07-34 (3Y)d	#07-35 (2P)c	
6		#06-28 (2)b	#06-29 (3)e	#06-30 (3)c	#06-31 (2P)b	#06-32 (2P)b	#06-33 (3)d	#06-34 (3Y)d	#06-35 (2P)c	
5		#05-28 (2)b	#05-29 (3)e	#05-30 (3)c	#05-31 (2P)b	#05-32 (2P)b	#05-33 (3)d	#05-34 (3Y)d	#05-35 (2P)c	
4		#04-28 (2)b	#04-29 (3)e	#04-30 (3)c	#04-31 (2P)b	#04-32 (2P)b	#04-33 (3)d	#04-34 (3Y)d	#04-35 (2P)c	
3		#03-28 (2)b	#03-29 (3)e	#03-30 (3)c	#03-31 (2P)b	#03-32 (2P)b	#03-33 (3)d	#03-34 (3Y)d	#03-35 (2P)c	
2		Carpark		#02-31 (2P)b	#02-32 (2P)b	#02-33 (3)d	Child Care Centre			
1		Carpark		#01-31 (2P)b	#01-32 (1)c	#01-33 (3)d	Child Care Centre			
B1		Lobby Carpark						Child Care Centre		

- 1-BEDROOM
- 1-BEDROOM (with Study)
- 2-BEDROOM
- 2-BEDROOM PREMIUM
- 2-BEDROOM (with Study)
- 3-BEDROOM
- 3-BEDROOM PREMIUM
- 3-BEDROOM (with Study)
- 4-BEDROOM

1-BEDROOM

TYPE (1)a1

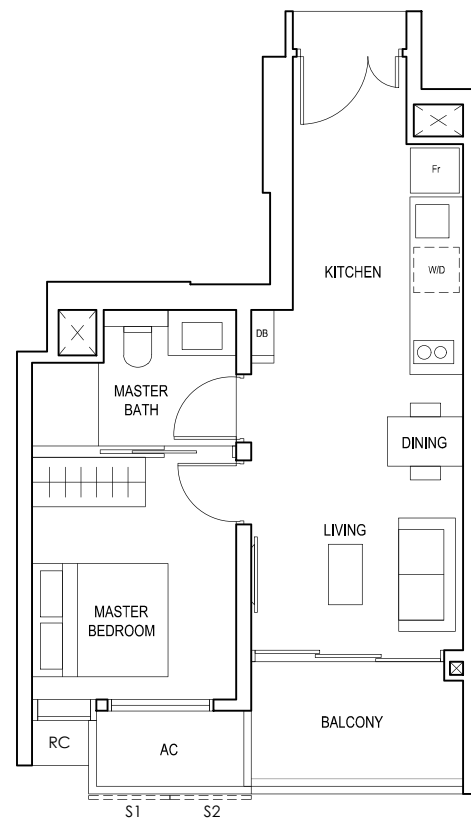
#01-05
45 sq m



S - FULL HEIGHT ALUMINIUM PERFORATED SCREEN

TYPE (1)a

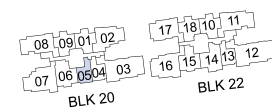
#02-05 to #18-05
45 sq m



FULL HEIGHT ALUMINIUM PERFORATED SCREEN LOCATED AT LEVELS:
S1 - #03, #05, #07, #09, #11, #13, #15 & #17
S2 - #02, #04, #06, #08, #10, #12, #14, #16 & #18

LEGEND:
Fr - FRIDGE DB - DISTRIBUTION BOARD W/D - WASHER CUM DRYER
AC - AIRCON LEDGE PES - PRIVATE ENCLOSED SPACE RC - REINFORCED CONCRETE LEDGE

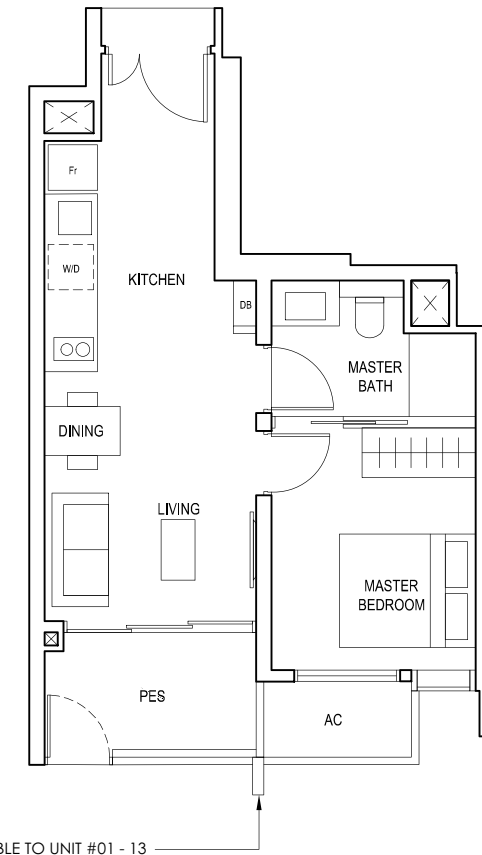
* AREA INCLUDES AIRCON (AC) LEDGE, BALCONY AND PRIVATE ENCLOSED SPACE (PES).
* THE BALCONY/PRIVATE ENCLOSED SPACE (PES) SHALL NOT BE ENCLOSED UNLESS WITH THE APPROVED BALCONY/PES SCREEN. FOR AN ILLUSTRATION OF THE APPROVED BALCONY/PES SCREEN, PLEASE REFER TO THE DIAGRAM ANNEXED HERETO AS "ANNEXURE 1".



1-BEDROOM

TYPE (1)b1

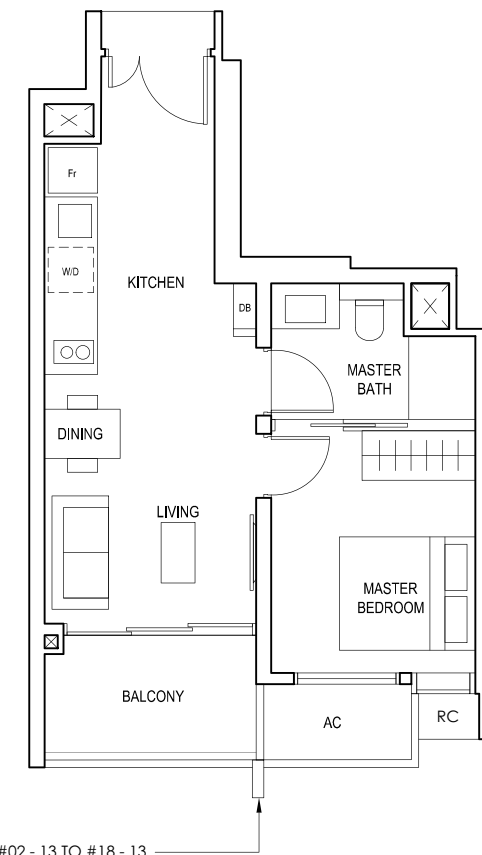
#01-04
#01-13
44 sq m



RC COLUMN ONLY APPLICABLE TO UNIT #01 - 13

TYPE (1)b

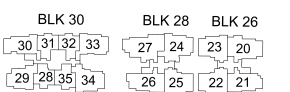
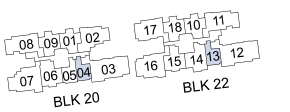
#02-04 to #18-04
#02-13 to #18-13
44 sq m



RC COLUMN ONLY APPLICABLE TO UNIT #02 - 13 TO #18 - 13

LEGEND:
Fr - FRIDGE DB - DISTRIBUTION BOARD W/D - WASHER CUM DRYER
AC - AIRCON LEDGE PES - PRIVATE ENCLOSED SPACE RC - REINFORCED CONCRETE LEDGE

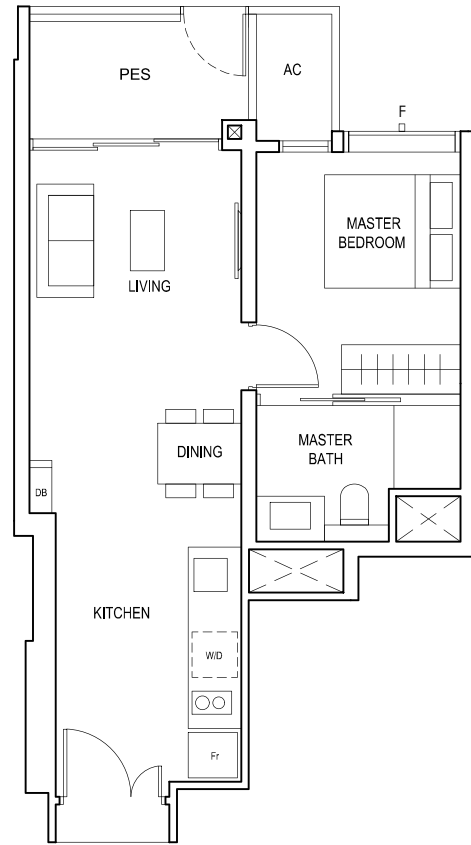
* AREA INCLUDES AIRCON (AC) LEDGE, BALCONY AND PRIVATE ENCLOSED SPACE (PES).
* THE BALCONY/PRIVATE ENCLOSED SPACE (PES) SHALL NOT BE ENCLOSED UNLESS WITH THE APPROVED BALCONY/PES SCREEN. FOR AN ILLUSTRATION OF THE APPROVED BALCONY/PES SCREEN, PLEASE REFER TO THE DIAGRAM ANNEXED HERETO AS "ANNEXURE 1".



1-BEDROOM

TYPE (1)c1

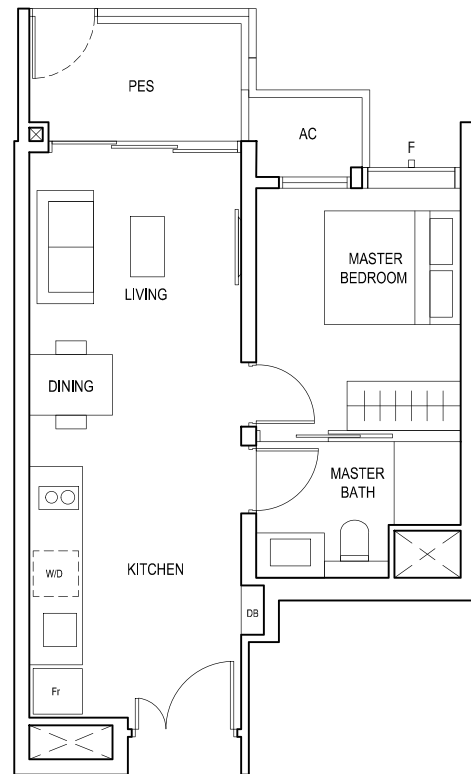
#01-32
48 sq m



F - FULL HEIGHT ALUMINIUM FIN

TYPE (1)d1

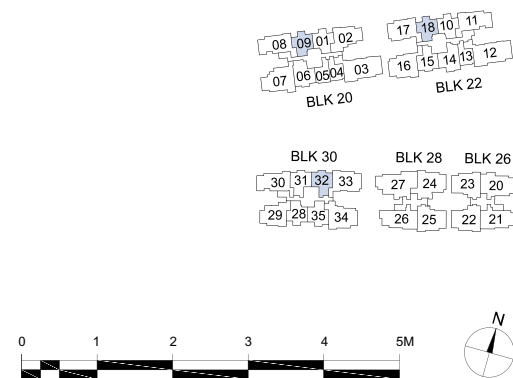
#05-09
#05-18
46 sq m



F - FULL HEIGHT ALUMINIUM FIN

LEGEND:
Fr - FRIDGE DB - DISTRIBUTION BOARD W/D - WASHER CUM DRYER
AC - AIRCON LEDGE PES - PRIVATE ENCLOSED SPACE

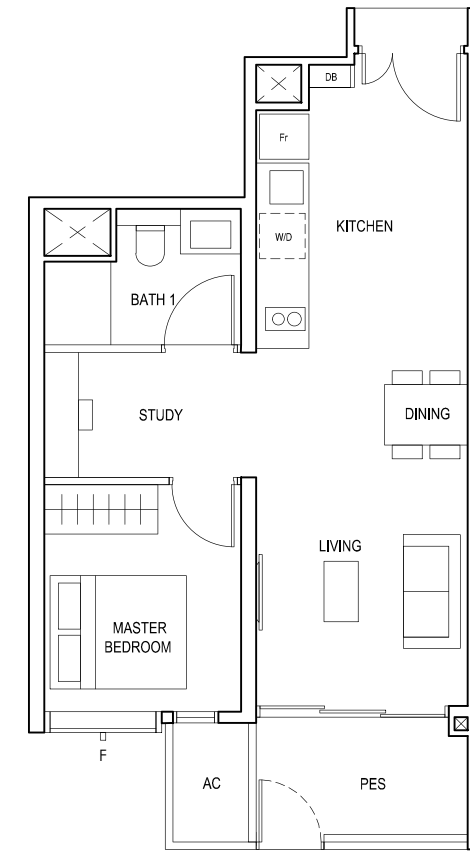
* AREA INCLUDES AIRCON (AC) LEDGE, BALCONY AND PRIVATE ENCLOSED SPACE (PES).
* THE BALCONY/PRIVATE ENCLOSED SPACE (PES) SHALL NOT BE ENCLOSED UNLESS WITH THE APPROVED BALCONY/PES SCREEN. FOR AN ILLUSTRATION OF THE APPROVED BALCONY/PES SCREEN, PLEASE REFER TO THE DIAGRAM ANNEXED HERETO AS "ANNEXURE 1".



1-BEDROOM (with Study)

TYPE (1+1)a1

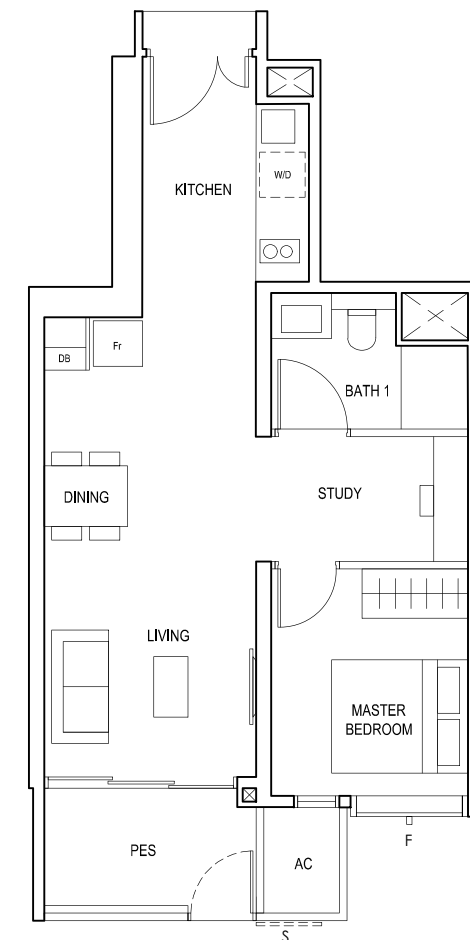
#01-06
52 sq m



F - FULL HEIGHT ALUMINIUM FIN

TYPE (1+1)b1

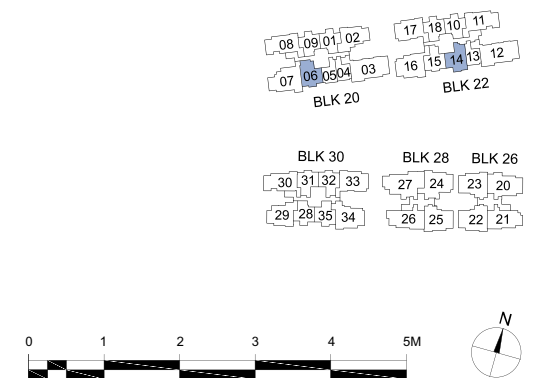
#01-14
53 sq m



S - FULL HEIGHT ALUMINIUM PERFORATED SCREEN
F - FULL HEIGHT ALUMINIUM FIN

LEGEND:
Fr - FRIDGE DB - DISTRIBUTION BOARD W/D - WASHER CUM DRYER
AC - AIRCON LEDGE PES - PRIVATE ENCLOSED SPACE

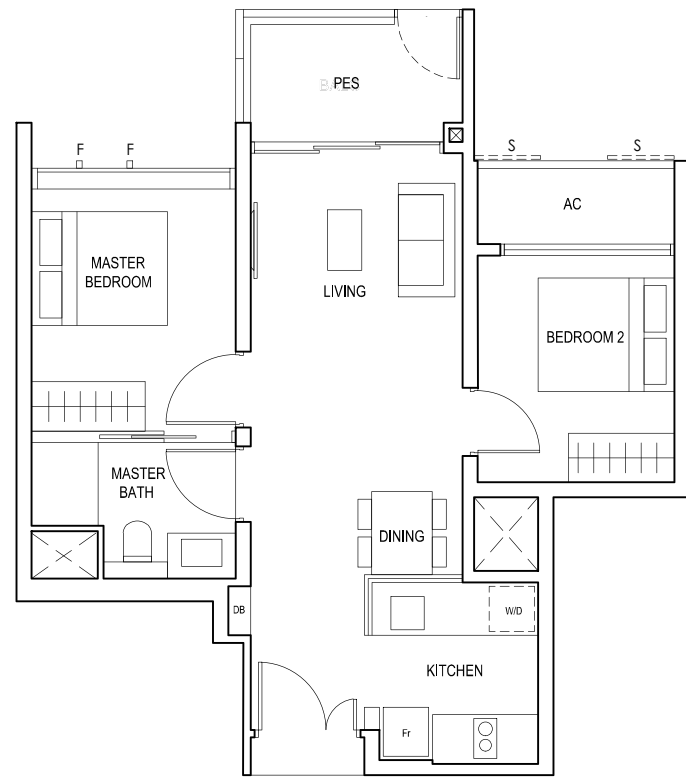
* AREA INCLUDES AIRCON (AC) LEDGE, BALCONY AND PRIVATE ENCLOSED SPACE (PES).
* THE BALCONY/PRIVATE ENCLOSED SPACE (PES) SHALL NOT BE ENCLOSED UNLESS WITH THE APPROVED BALCONY/PES SCREEN. FOR AN ILLUSTRATION OF THE APPROVED BALCONY/PES SCREEN, PLEASE REFER TO THE DIAGRAM ANNEXED HERETO AS "ANNEXURE 1".



2-BEDROOM

TYPE (2)a1

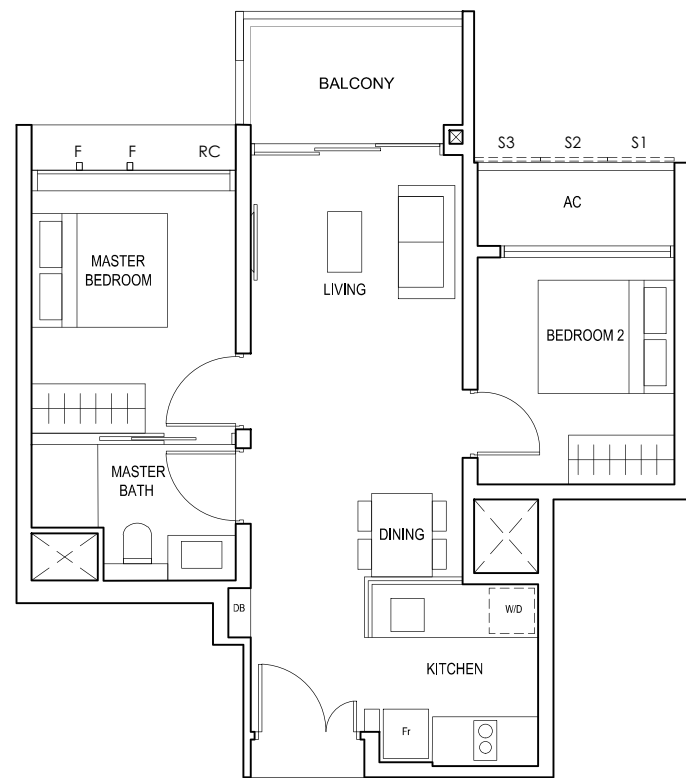
#05-01
#05-10
60 sq m



S - FULL HEIGHT ALUMINIUM PERFORATED SCREEN
F - FULL HEIGHT ALUMINIUM FIN

TYPE (2)a

#06-01 to #18-01
#06-10 to #18-10
60 sq m



FULL HEIGHT ALUMINIUM PERFORATED SCREEN LOCATED AT LEVELS:
S1 - #06, #07, #09, #10, #11, #13, #14, #15, #17 & #18
S2 - #06, #08, #10, #12, #14, #16 & #18
S3 - #07, #08, #09, #11, #12, #13, #15, #16 & #17

F - FULL HEIGHT ALUMINIUM FIN

LEGEND:
Fr - FRIDGE DB - DISTRIBUTION BOARD W/D - WASHER CUM DRYER
AC - AIRCON LEDGE PES - PRIVATE ENCLOSED SPACE RC - REINFORCED CONCRETE LEDGE

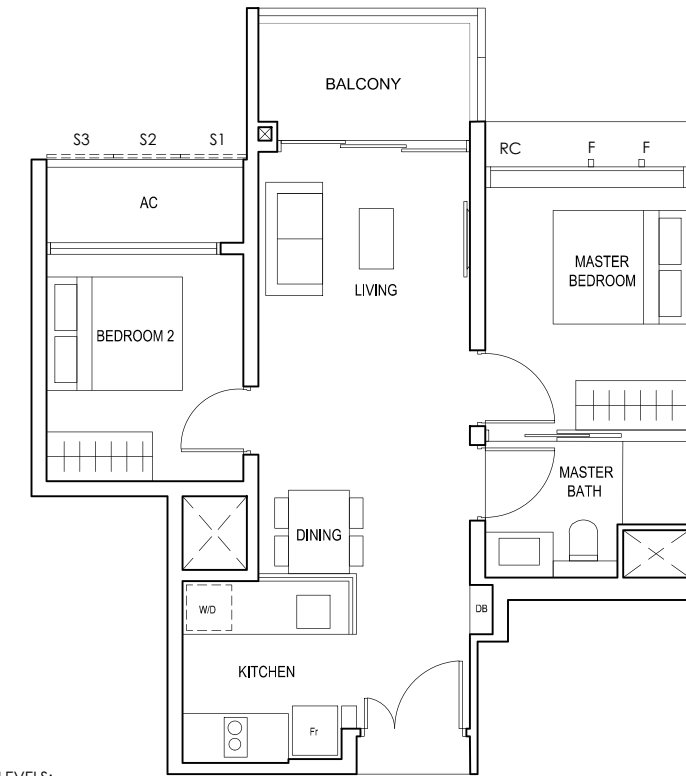
* AREA INCLUDES AIRCON (AC) LEDGE, BALCONY AND PRIVATE ENCLOSED SPACE (PES).
* THE BALCONY/PRIVATE ENCLOSED SPACE (PES) SHALL NOT BE ENCLOSED UNLESS WITH THE APPROVED BALCONY/PES SCREEN. FOR AN ILLUSTRATION OF THE APPROVED BALCONY/PES SCREEN, PLEASE REFER TO THE DIAGRAM ANNEXED HERETO AS "ANNEXURE 1".



2-BEDROOM

TYPE (2)a

#06-09 to #18-09
#06-18 to #18-18
60 sq m

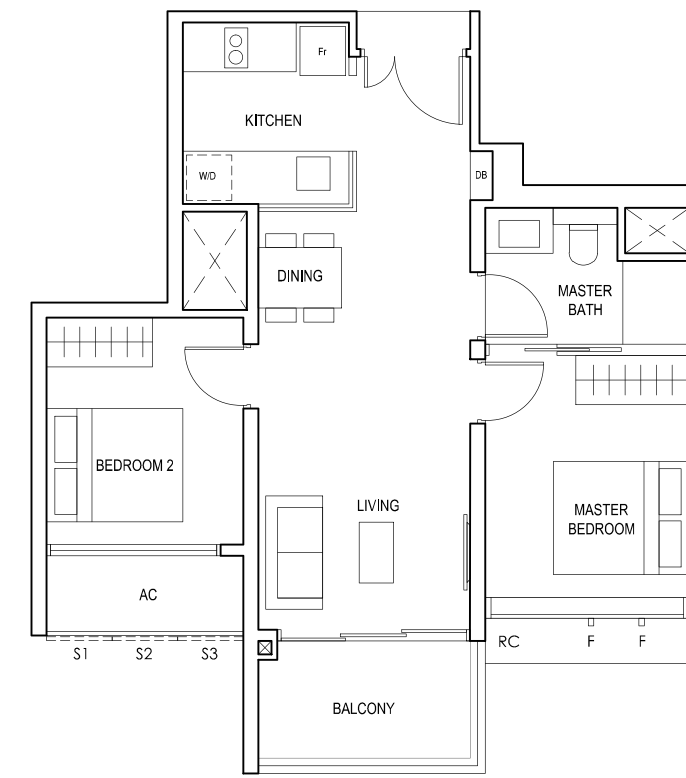


FULL HEIGHT ALUMINIUM PERFORATED SCREEN LOCATED AT LEVELS:
S1 - #06, #07, #09, #10, #11, #13, #14, #15, #17 & #18
S2 - #06, #08, #10, #12, #14, #16 & #18
S3 - #07, #08, #09, #11, #12, #13, #15, #16 & #17

F - FULL HEIGHT ALUMINIUM FIN

TYPE (2)b

#03-28 to #17-28
60 sq m

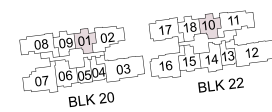


FULL HEIGHT ALUMINIUM PERFORATED SCREEN LOCATED AT LEVELS:
S1 - #03, #05, #06, #07, #09, #10, #11, #13, #14, #15 & #17
S2 - #04, #06, #08, #10, #12, #14 & #16
S3 - #03, #04, #05, #07, #08, #09, #11, #12, #13, #15, #16 & #17

F - FULL HEIGHT ALUMINIUM FIN

LEGEND:
Fr - FRIDGE DB - DISTRIBUTION BOARD W/D - WASHER CUM DRYER
AC - AIRCON LEDGE RC - REINFORCED CONCRETE LEDGE

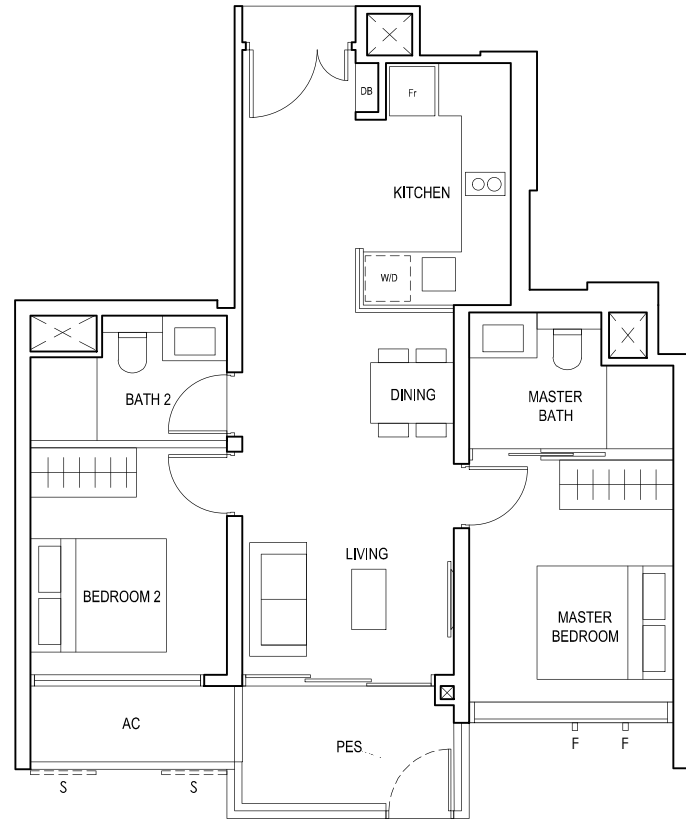
* AREA INCLUDES AIRCON (AC) LEDGE, BALCONY AND PRIVATE ENCLOSED SPACE (PES).
* THE BALCONY/PRIVATE ENCLOSED SPACE (PES) SHALL NOT BE ENCLOSED UNLESS WITH THE APPROVED BALCONY/PES SCREEN. FOR AN ILLUSTRATION OF THE APPROVED BALCONY/PES SCREEN, PLEASE REFER TO THE DIAGRAM ANNEXED HERETO AS "ANNEXURE 1".



2-BEDROOM PREMIUM

TYPE (2P)a1

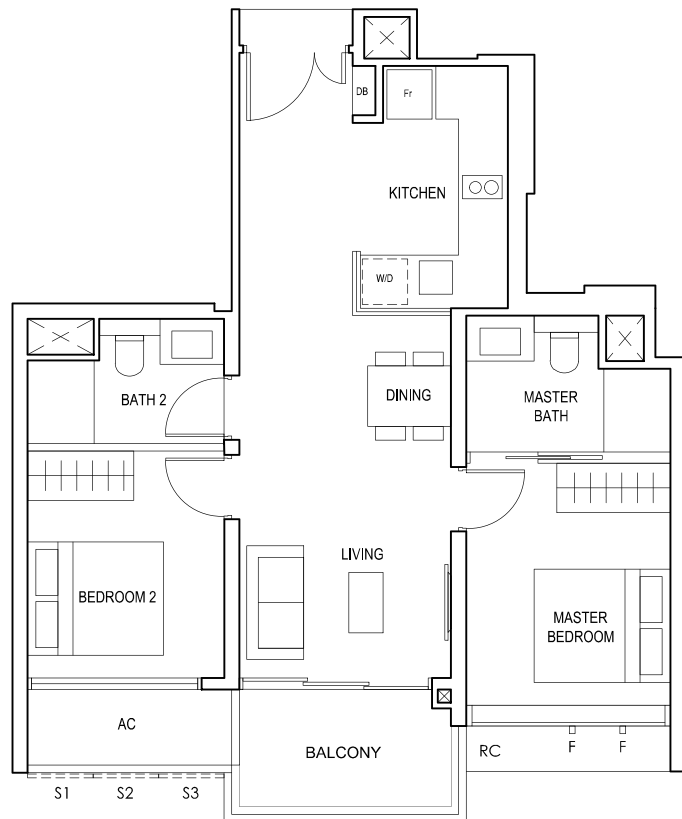
#01-15
65 sq m



S - FULL HEIGHT ALUMINIUM PERFORATED SCREEN
F - FULL HEIGHT ALUMINIUM FIN

TYPE (2P)a

#02-15 to #18-15
65 sq m

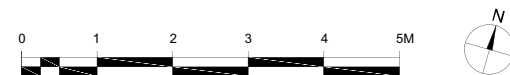


FULL HEIGHT ALUMINIUM PERFORATED SCREEN LOCATED AT LEVELS:
S1 - #02, #03, #05, #06, #07, #09, #10, #11, #13, #14, #15, #17 & #18
S2 - #02, #04, #06, #08, #10, #12, #14, #16 & #18
S3 - #03, #04, #05, #07, #08, #09, #11, #12, #13, #15, #16, #17

F - FULL HEIGHT ALUMINIUM FIN

LEGEND:
Fr - FRIDGE DB - DISTRIBUTION BOARD W/D - WASHER CUM DRYER
AC - AIRCON LEDGE PES - PRIVATE ENCLOSED SPACE RC - REINFORCED CONCRETE LEDGE

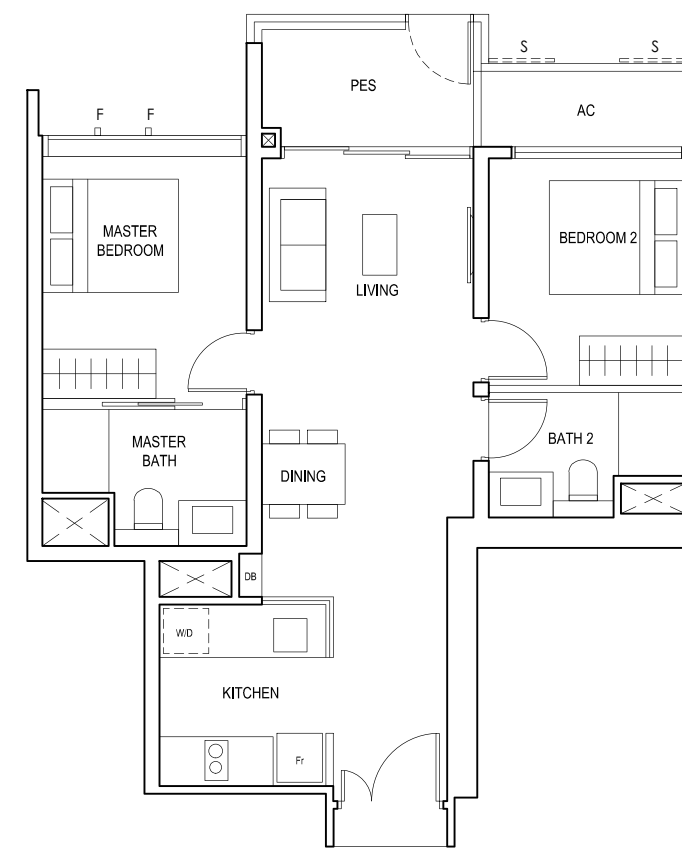
* AREA INCLUDES AIRCON (AC) LEDGE, BALCONY AND PRIVATE ENCLOSED SPACE (PES).
* THE BALCONY/PRIVATE ENCLOSED SPACE (PES) SHALL NOT BE ENCLOSED UNLESS WITH THE APPROVED BALCONY/PES SCREEN. FOR AN ILLUSTRATION OF THE APPROVED BALCONY/PES SCREEN, PLEASE REFER TO THE DIAGRAM ANNEXED HERETO AS "ANNEXURE 1".



2-BEDROOM PREMIUM

TYPE (2P)b1

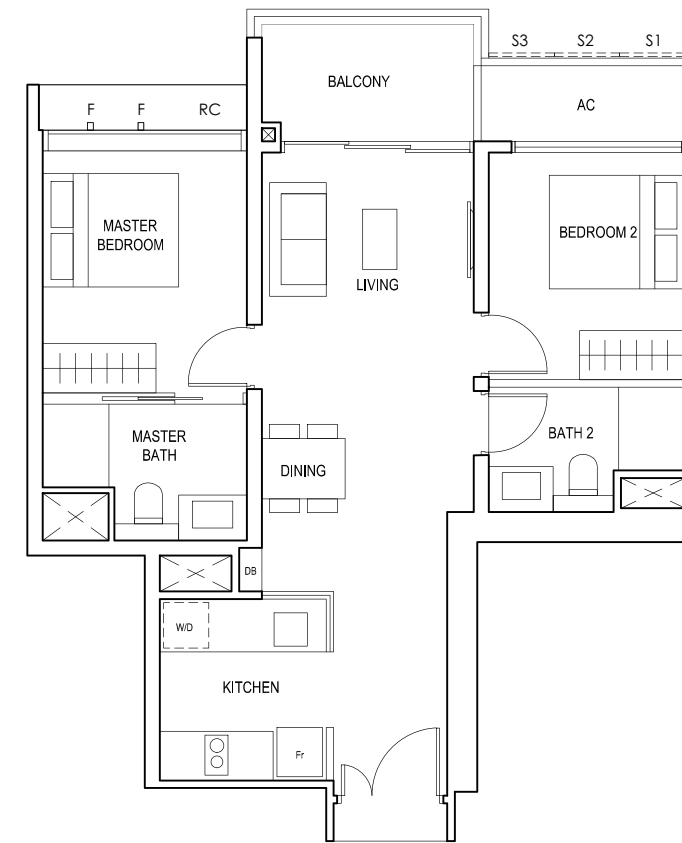
#01-31
66 sq m



S - FULL HEIGHT ALUMINIUM PERFORATED SCREEN
F - FULL HEIGHT ALUMINIUM FIN

TYPE (2P)b

#02-31 to #18-31
66 sq m

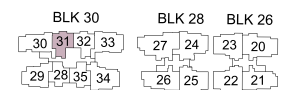
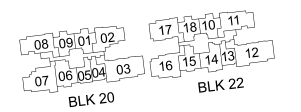
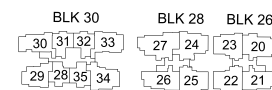
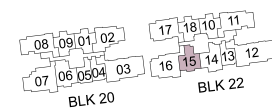
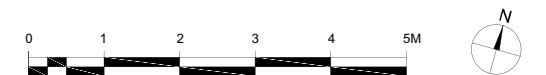


FULL HEIGHT ALUMINIUM PERFORATED SCREEN LOCATED AT LEVELS:
S1 - #02, #03, #05, #06, #07, #09, #10, #11, #13, #14, #15, #17 & #18
S2 - #02, #04, #06, #08, #10, #12, #14, #16 & #18
S3 - #03, #04, #05, #07, #08, #09, #11, #12, #13, #15, #16, #17

F - FULL HEIGHT ALUMINIUM FIN

LEGEND:
Fr - FRIDGE DB - DISTRIBUTION BOARD W/D - WASHER CUM DRYER
AC - AIRCON LEDGE PES - PRIVATE ENCLOSED SPACE RC - REINFORCED CONCRETE LEDGE

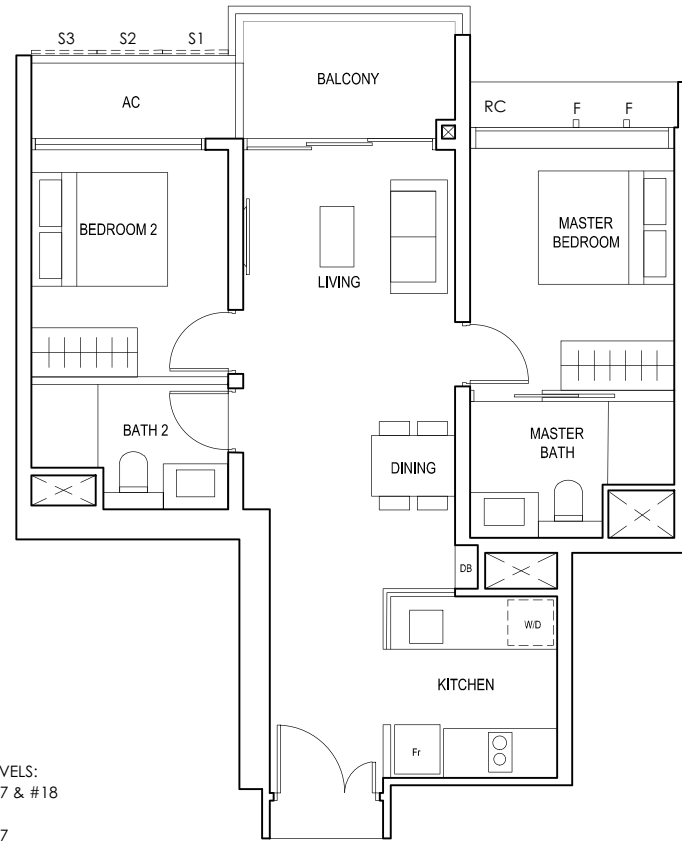
* AREA INCLUDES AIRCON (AC) LEDGE, BALCONY AND PRIVATE ENCLOSED SPACE (PES).
* THE BALCONY/PRIVATE ENCLOSED SPACE (PES) SHALL NOT BE ENCLOSED UNLESS WITH THE APPROVED BALCONY/PES SCREEN. FOR AN ILLUSTRATION OF THE APPROVED BALCONY/PES SCREEN, PLEASE REFER TO THE DIAGRAM ANNEXED HERETO AS "ANNEXURE 1".



2-BEDROOM PREMIUM

TYPE (2P)b

#02-32 to #18-32
66 sq m

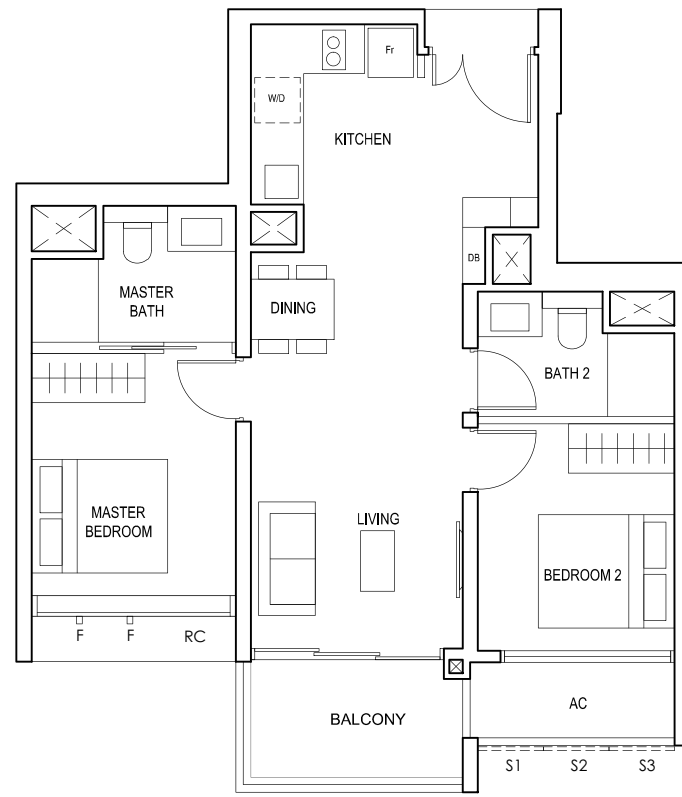


FULL HEIGHT ALUMINIUM PERFORATED SCREEN LOCATED AT LEVELS:
S1 - #02, #03, #05, #06, #07, #09, #10, #11, #13, #14, #15, #17 & #18
S2 - #02, #04, #06, #08, #10, #12, #14, #16 & #18
S3 - #03, #04, #05, #07, #08, #09, #11, #12, #13, #15, #16, #17

F - FULL HEIGHT ALUMINIUM FIN

TYPE (2P)c

#03-35 to #17-35
65 sq m

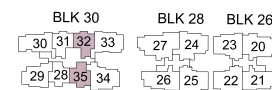
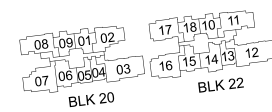


FULL HEIGHT ALUMINIUM PERFORATED SCREEN LOCATED AT LEVELS:
S1 - #03, #05, #06, #07, #09, #10, #11, #13, #14, #15 & #17
S2 - #04, #06, #08, #10, #12, #14 & #16
S3 - #03, #04, #05, #07, #08, #09, #11, #12, #13, #15, #16, #17

F - FULL HEIGHT ALUMINIUM FIN

LEGEND:
Fr - FRIDGE DB - DISTRIBUTION BOARD W/D - WASHER CUM DRYER
AC - AIRCON LEDGE RC - REINFORCED CONCRETE LEDGE

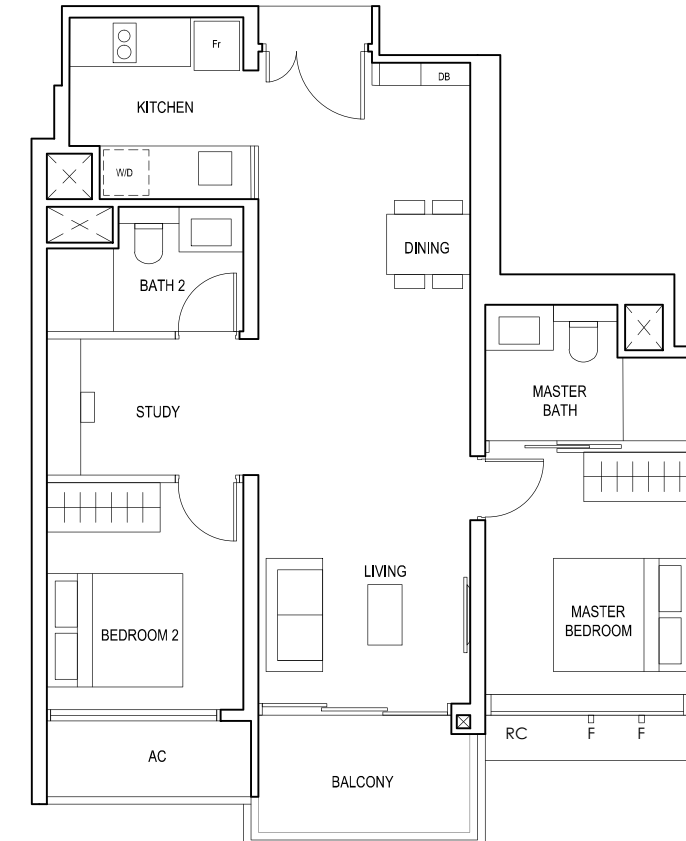
* AREA INCLUDES AIRCON (AC) LEDGE, BALCONY AND PRIVATE ENCLOSED SPACE (PES).
* THE BALCONY/PRIVATE ENCLOSED SPACE (PES) SHALL NOT BE ENCLOSED UNLESS WITH THE APPROVED BALCONY/PES SCREEN. FOR AN ILLUSTRATION OF THE APPROVED BALCONY/PES SCREEN, PLEASE REFER TO THE DIAGRAM ANNEXED HERETO AS "ANNEXURE 1".



2-BEDROOM (with Study)

TYPE (2+1)a

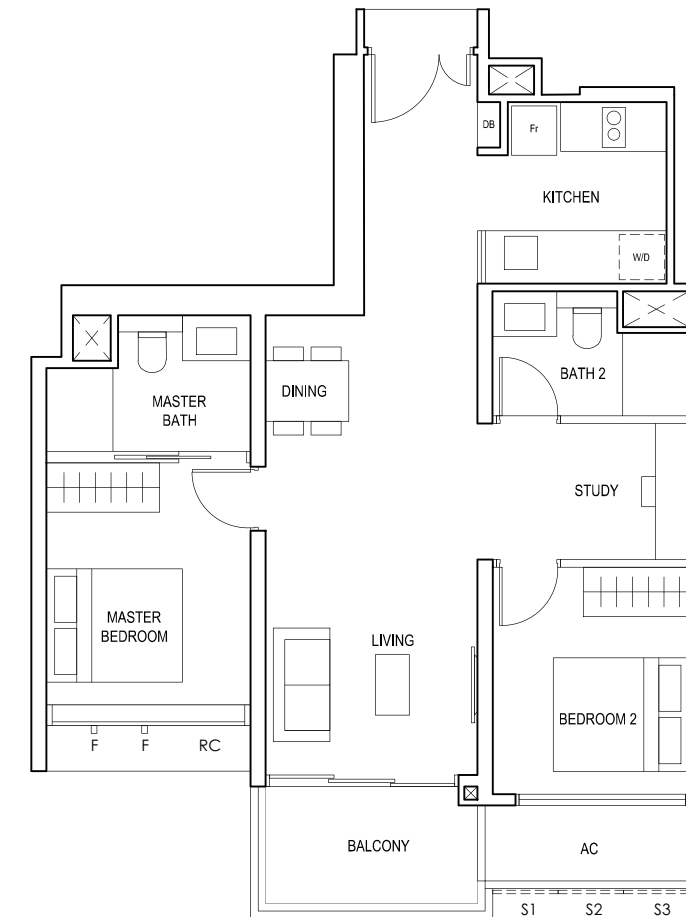
#02-06 to #18-06
75 sq m



F - FULL HEIGHT ALUMINIUM FIN

TYPE (2+1)b

#02-14 to #18-14
74 sq m

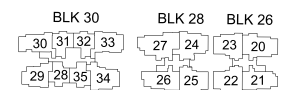
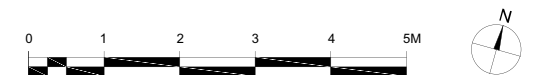


FULL HEIGHT ALUMINIUM PERFORATED SCREEN LOCATED AT LEVELS:
S1 - #02, #03, #05, #06, #07, #09, #10, #11, #13, #14, #15, #17 & #18
S2 - #02, #04, #06, #08, #10, #12, #14, #16 & #18
S3 - #03, #04, #05, #07, #08, #09, #11, #12, #13, #15, #16, #17

F - FULL HEIGHT ALUMINIUM FIN

LEGEND:
Fr - FRIDGE DB - DISTRIBUTION BOARD W/D - WASHER CUM DRYER
AC - AIRCON LEDGE RC - REINFORCED CONCRETE LEDGE

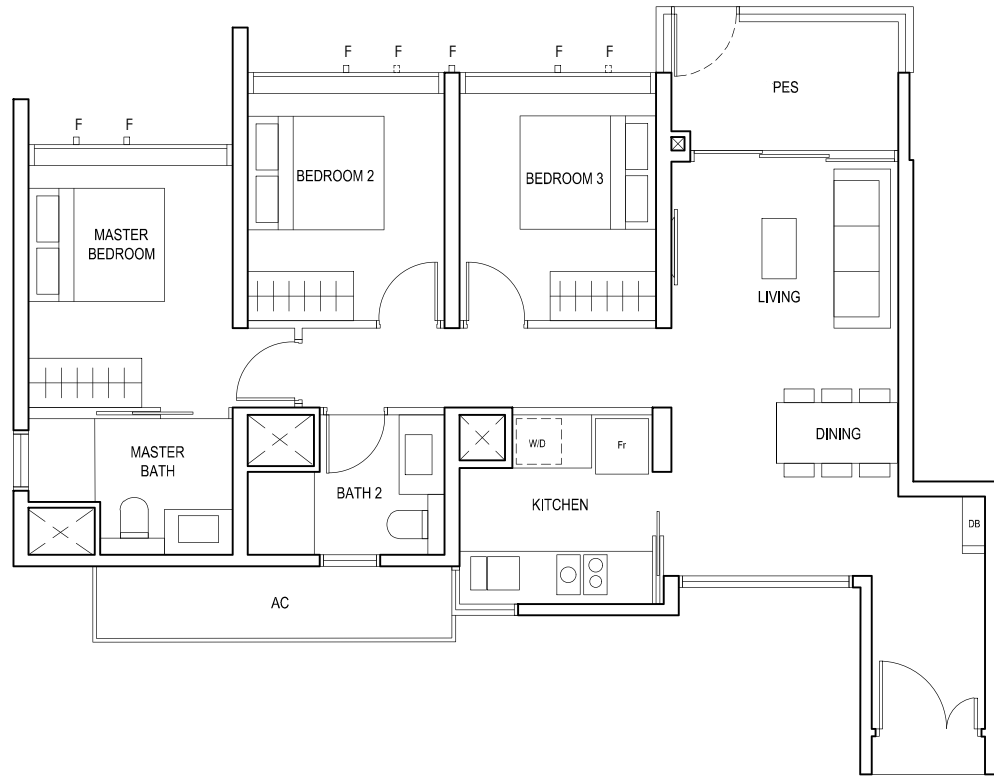
* AREA INCLUDES AIRCON (AC) LEDGE, BALCONY AND PRIVATE ENCLOSED SPACE (PES).
* THE BALCONY/PRIVATE ENCLOSED SPACE (PES) SHALL NOT BE ENCLOSED UNLESS WITH THE APPROVED BALCONY/PES SCREEN. FOR AN ILLUSTRATION OF THE APPROVED BALCONY/PES SCREEN, PLEASE REFER TO THE DIAGRAM ANNEXED HERETO AS "ANNEXURE 1".



3-BEDROOM

TYPE (3)a1

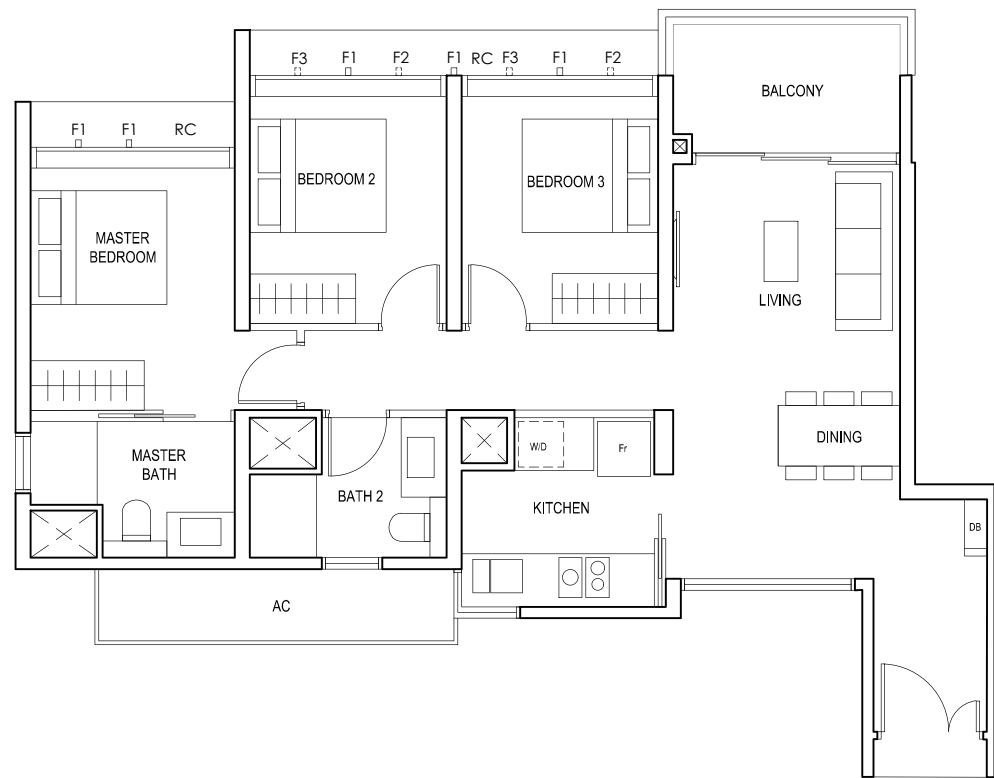
#05-17
87 sq m



F - FULL HEIGHT ALUMINIUM FIN

TYPE (3)a

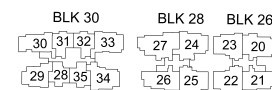
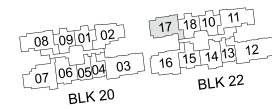
#06-17 to #18-17
87 sq m



FULL HEIGHT ALUMINIUM FIN LOCATED AT LEVELS:
F1 - #06 to #18
F2 - #06, #09, #10, #13, #14, #17 & #18
F3 - #07, #08, #11, #12, #15 & #16

LEGEND:
Fr - FRIDGE DB - DISTRIBUTION BOARD W/D - WASHER CUM DRYER
AC - AIRCON LEDGE PES - PRIVATE ENCLOSED SPACE RC - REINFORCED CONCRETE LEDGE

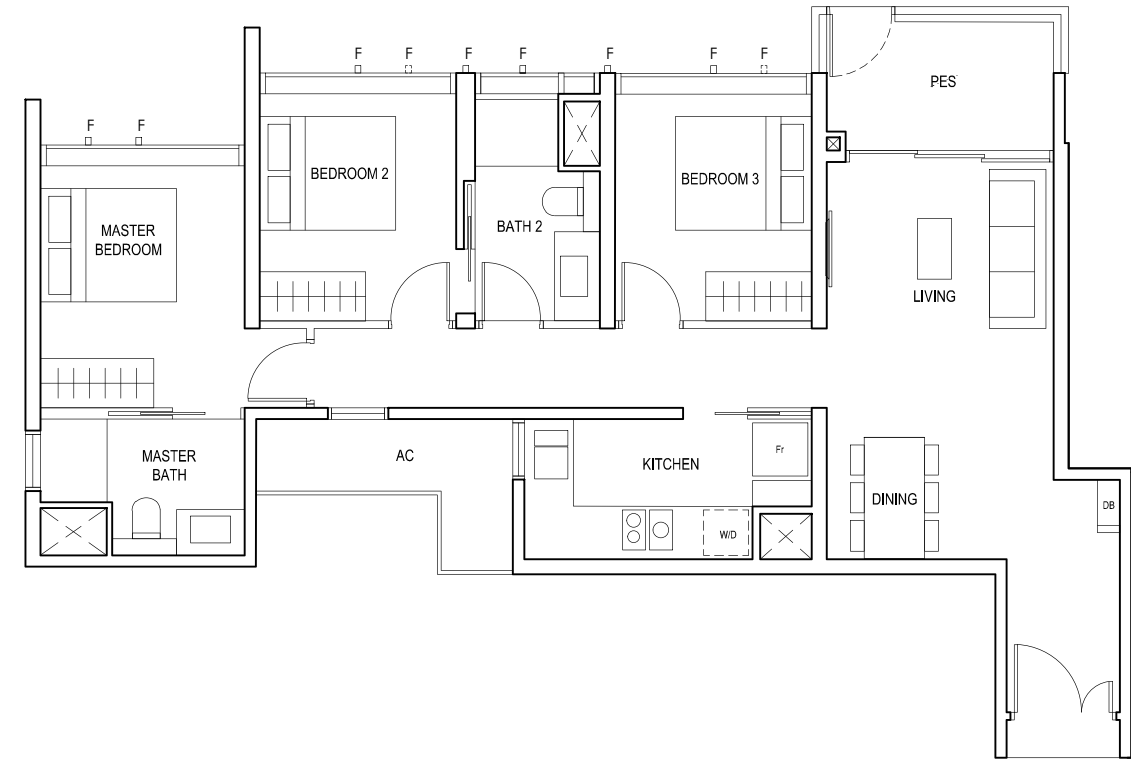
* AREA INCLUDES AIRCON (AC) LEDGE, BALCONY AND PRIVATE ENCLOSED SPACE (PES).
* THE BALCONY/PRIVATE ENCLOSED SPACE (PES) SHALL NOT BE ENCLOSED UNLESS WITH THE APPROVED BALCONY/PES SCREEN. FOR AN ILLUSTRATION OF THE APPROVED BALCONY/PES SCREEN, PLEASE REFER TO THE DIAGRAM ANNEXED HERETO AS "ANNEXURE 1".



3-BEDROOM

TYPE (3)b1

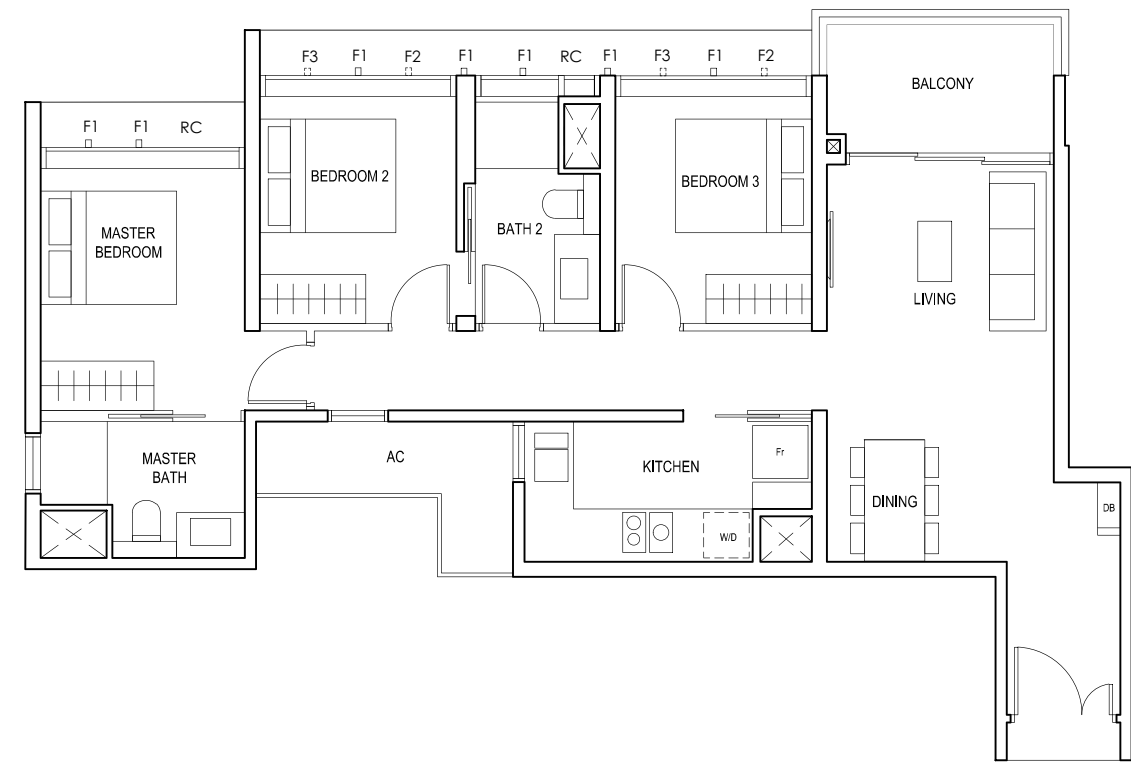
#05-08
89 sq m



F - FULL HEIGHT ALUMINIUM FIN

TYPE (3)b

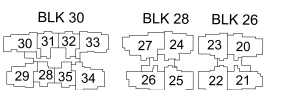
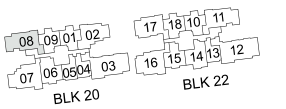
#06-08 to #18-08
89 sq m



FULL HEIGHT ALUMINIUM FIN LOCATED AT LEVELS:
F1 - #06 to #18
F2 - #06, #09, #10, #13, #14, #17 & #18
F3 - #07, #08, #11, #12, #15 & #16

LEGEND:
Fr - FRIDGE DB - DISTRIBUTION BOARD W/D - WASHER CUM DRYER
AC - AIRCON LEDGE PES - PRIVATE ENCLOSED SPACE RC - REINFORCED CONCRETE LEDGE

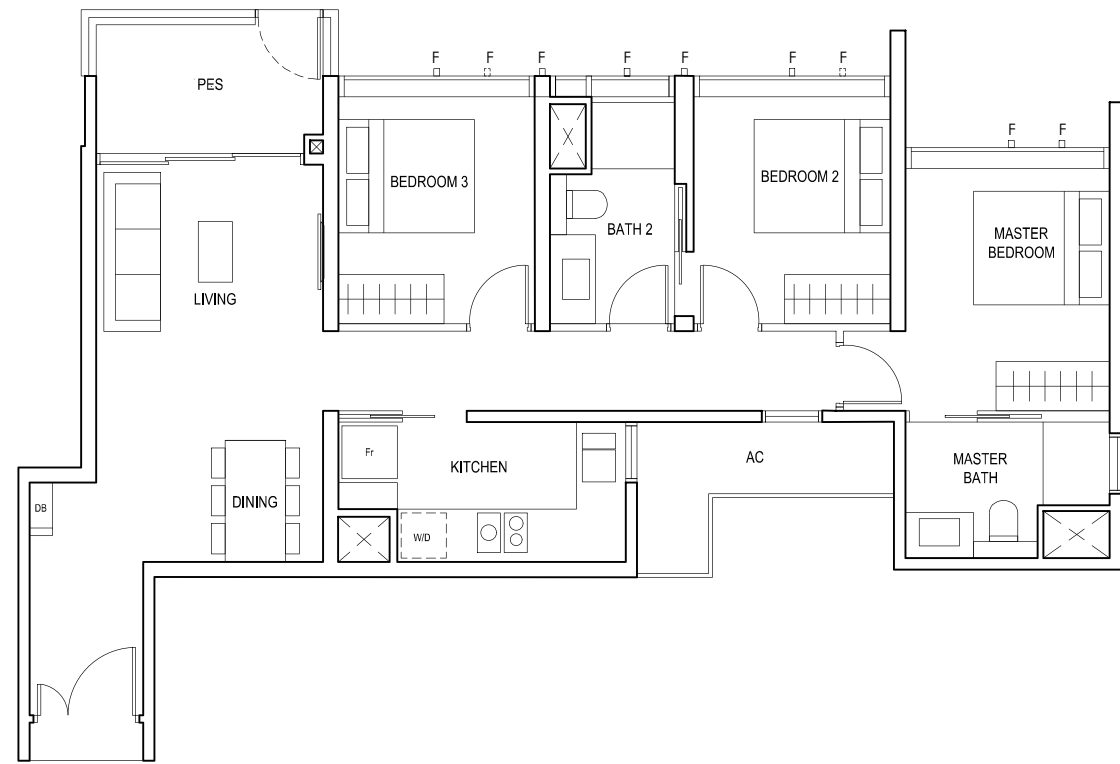
* AREA INCLUDES AIRCON (AC) LEDGE, BALCONY AND PRIVATE ENCLOSED SPACE (PES).
* THE BALCONY/PRIVATE ENCLOSED SPACE (PES) SHALL NOT BE ENCLOSED UNLESS WITH THE APPROVED BALCONY/PES SCREEN. FOR AN ILLUSTRATION OF THE APPROVED BALCONY/PES SCREEN, PLEASE REFER TO THE DIAGRAM ANNEXED HERETO AS "ANNEXURE 1".



3-BEDROOM

TYPE (3)b1

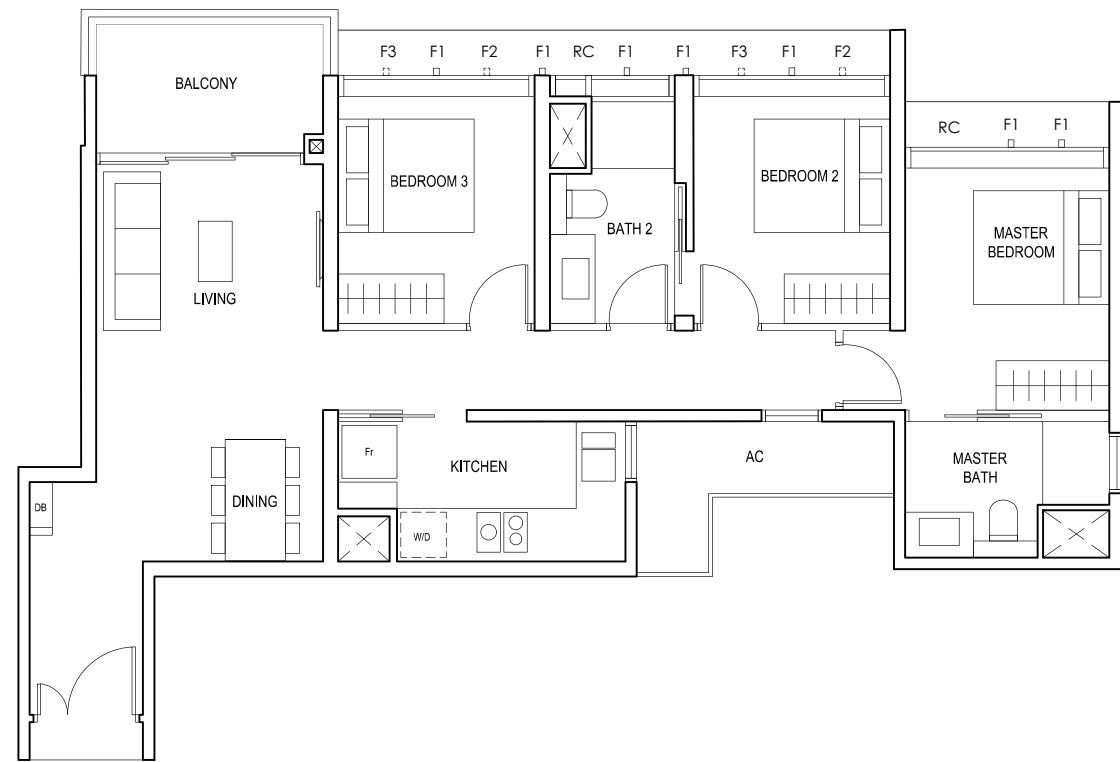
#05-11
89 sq m



F - FULL HEIGHT ALUMINIUM FIN

TYPE (3)b

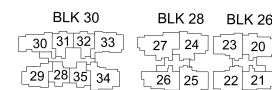
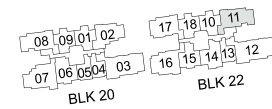
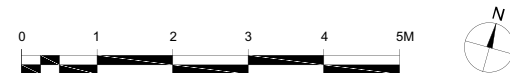
#06-11 to #18-11
89 sq m



FULL HEIGHT ALUMINIUM FIN LOCATED AT LEVELS:
F1 - #06 to #18
F2 - #06, #09, #10, #13, #14, #17 & #18
F3 - #07, #08, #11, #12, #15 & #16

LEGEND:
Fr - FRIDGE DB - DISTRIBUTION BOARD W/D - WASHER CUM DRYER
AC - AIRCON LEDGE PES - PRIVATE ENCLOSED SPACE RC - REINFORCED CONCRETE LEDGE

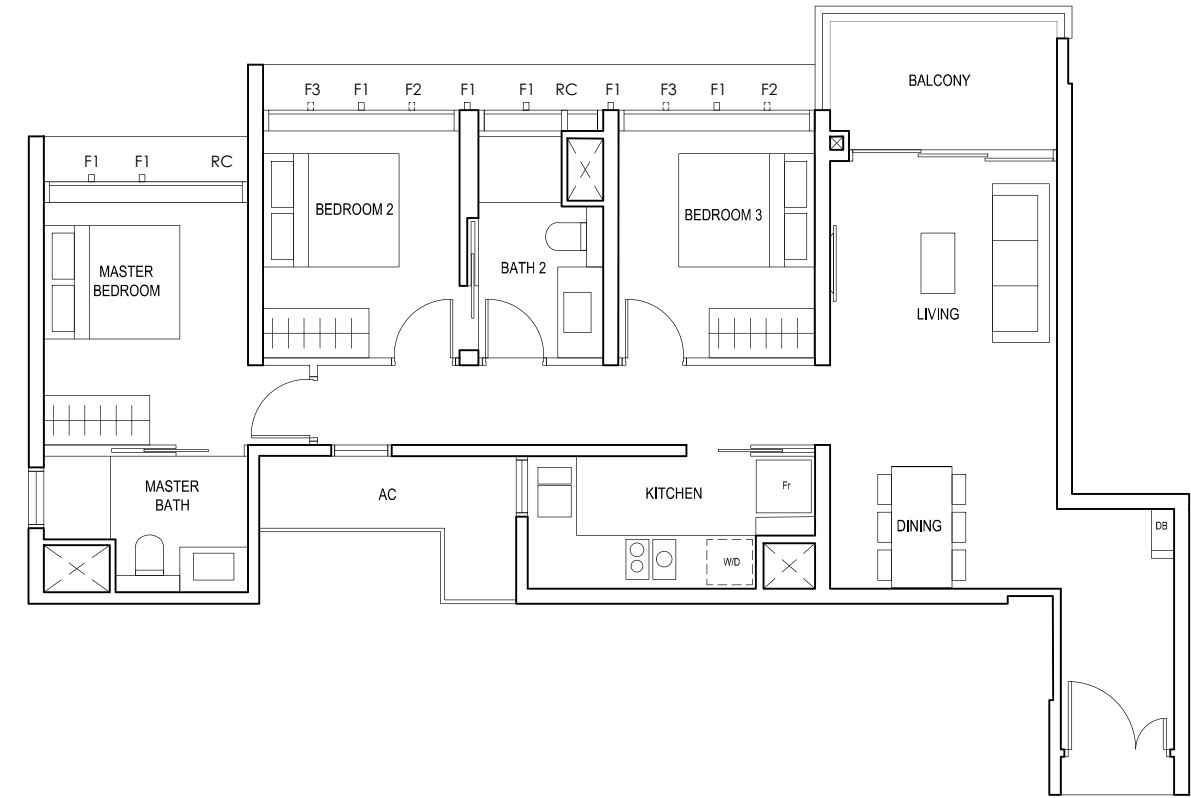
* AREA INCLUDES AIRCON (AC) LEDGE, BALCONY AND PRIVATE ENCLOSED SPACE (PES).
* THE BALCONY/PRIVATE ENCLOSED SPACE (PES) SHALL NOT BE ENCLOSED UNLESS WITH THE APPROVED BALCONY/PES SCREEN. FOR AN ILLUSTRATION OF THE APPROVED BALCONY/PES SCREEN, PLEASE REFER TO THE DIAGRAM ANNEXED HERETO AS "ANNEXURE 1".



3-BEDROOM

TYPE (3)c

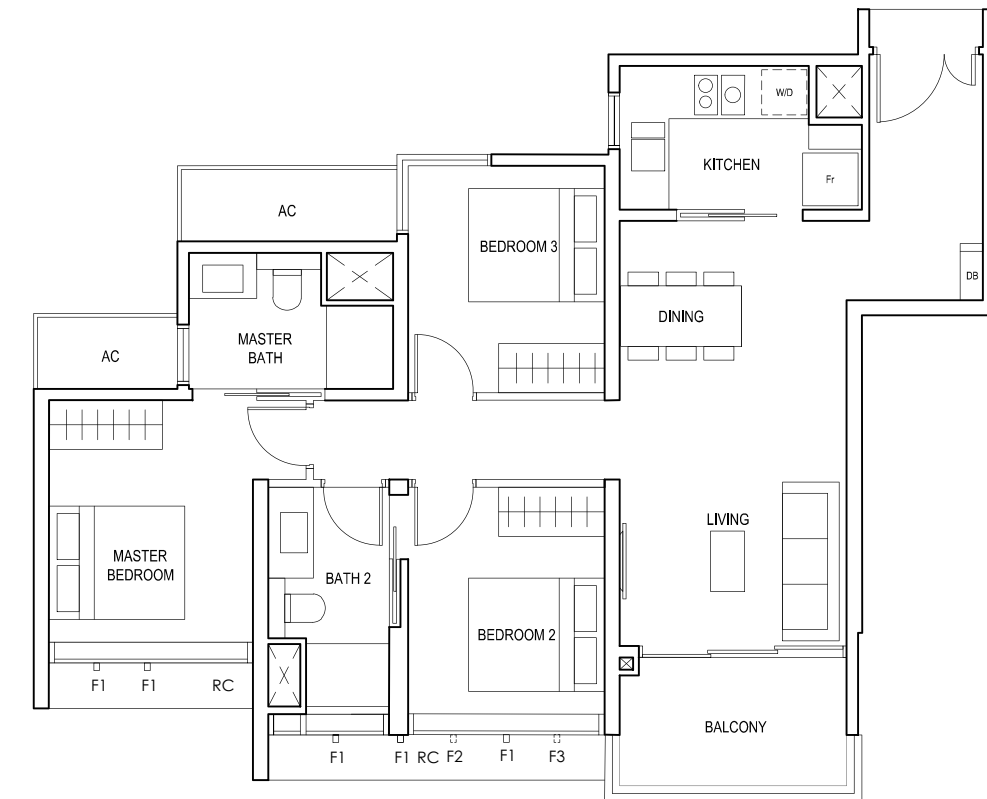
#03-30 to #18-30
91 sq m



FULL HEIGHT ALUMINIUM FIN LOCATED AT LEVELS:
F1 - #03 to #18
F2 - #05, #06, #09, #10, #13, #14, #17 & #18
F3 - #03, #04, #07, #08, #11, #12, #15 & #16

TYPE (3)e

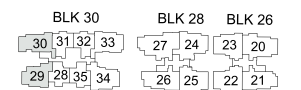
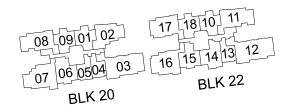
#03-29 to #17-29
87 sq m



FULL HEIGHT ALUMINIUM FIN LOCATED AT LEVELS:
F1 - #03 to #17
F2 - #05, #06, #09, #10, #13, #14 & #17
F3 - #03, #04, #07, #08, #11, #12, #15 & #16

LEGEND:
Fr - FRIDGE DB - DISTRIBUTION BOARD W/D - WASHER CUM DRYER
AC - AIRCON LEDGE RC - REINFORCED CONCRETE LEDGE

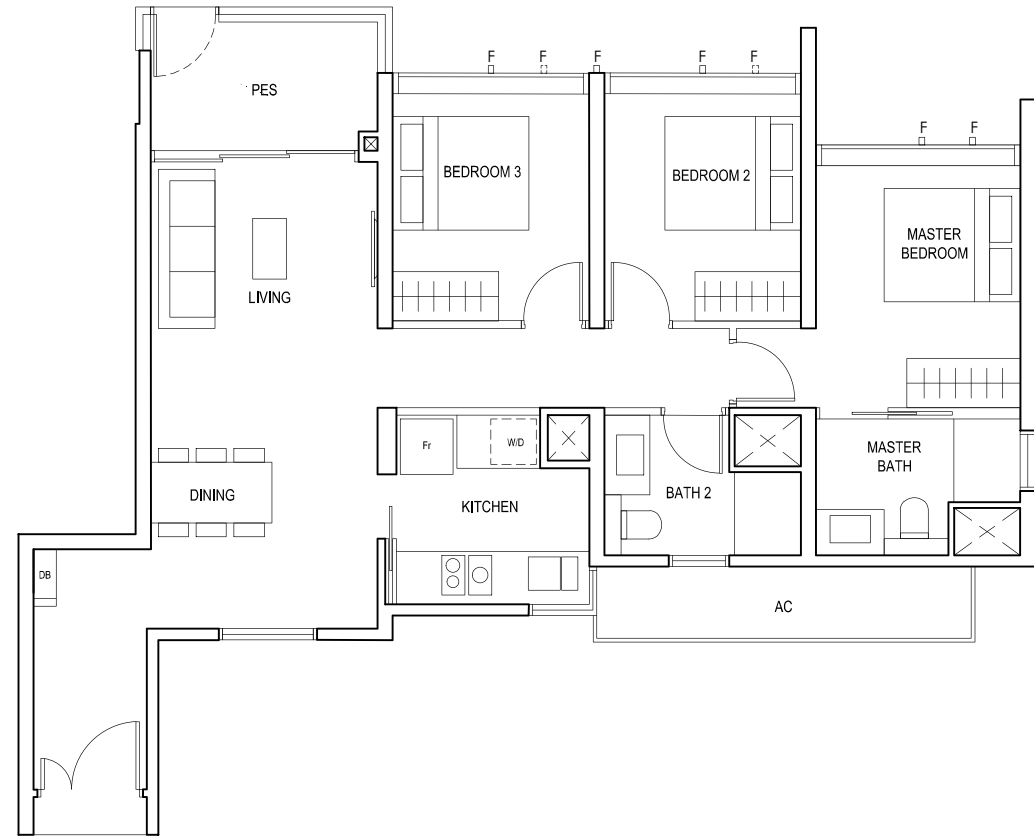
* AREA INCLUDES AIRCON (AC) LEDGE, BALCONY AND PRIVATE ENCLOSED SPACE (PES).
* THE BALCONY/PRIVATE ENCLOSED SPACE (PES) SHALL NOT BE ENCLOSED UNLESS WITH THE APPROVED BALCONY/PES SCREEN. FOR AN ILLUSTRATION OF THE APPROVED BALCONY/PES SCREEN, PLEASE REFER TO THE DIAGRAM ANNEXED HERETO AS "ANNEXURE 1".



3-BEDROOM

TYPE (3)d1

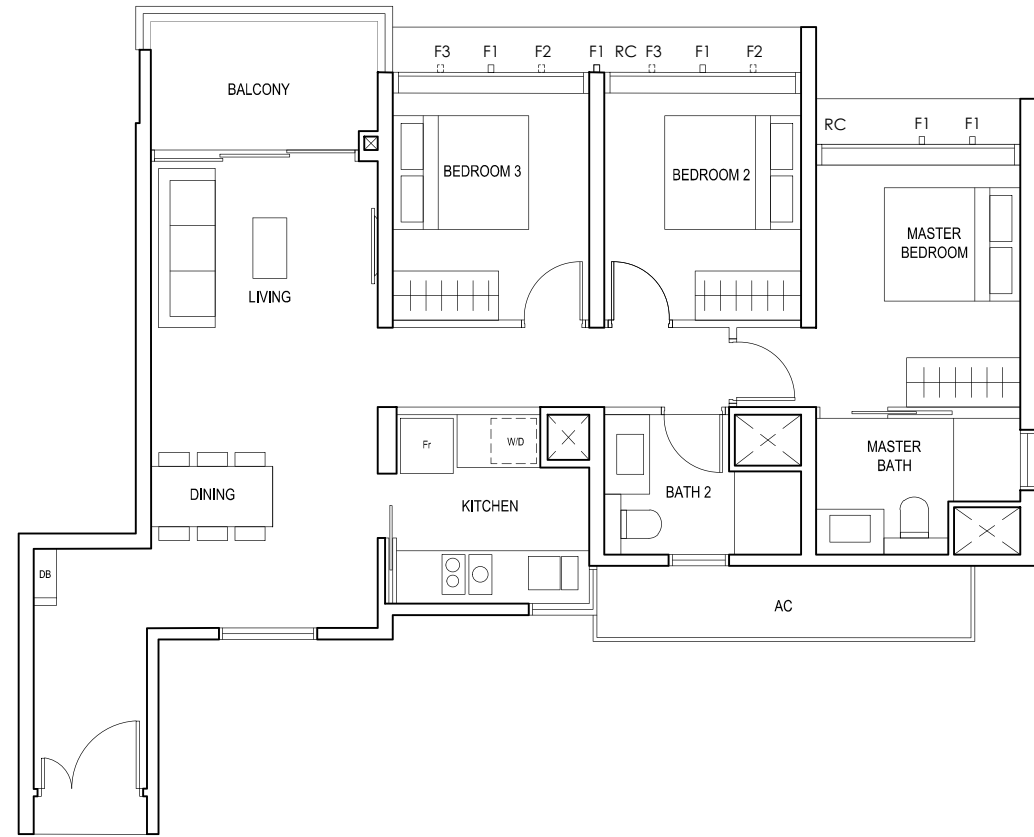
#01-33
90 sq m



F - FULL HEIGHT ALUMINIUM FIN

TYPE (3)d

#02-33 to #18-33
90 sq m

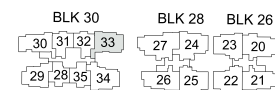
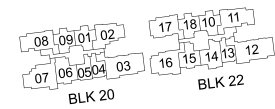


FULL HEIGHT ALUMINIUM FIN LOCATED AT LEVELS:

- F1 - #02 to #18
- F2 - #02, #05, #06, #09, #10, #13, #14, #17 & #18
- F3 - #03, #04, #07, #08, #11, #12, #15 & #16

LEGEND:
Fr - FRIDGE DB - DISTRIBUTION BOARD W/D - WASHER CUM DRYER
AC - AIRCON LEDGE PES - PRIVATE ENCLOSED SPACE RC - REINFORCED CONCRETE LEDGE

* AREA INCLUDES AIRCON (AC) LEDGE, BALCONY AND PRIVATE ENCLOSED SPACE (PES).
* THE BALCONY/PRIVATE ENCLOSED SPACE (PES) SHALL NOT BE ENCLOSED UNLESS WITH THE APPROVED BALCONY/PES SCREEN. FOR AN ILLUSTRATION OF THE APPROVED BALCONY/PES SCREEN, PLEASE REFER TO THE DIAGRAM ANNEXED HERETO AS "ANNEXURE 1".



3-BEDROOM

TYPE (3)f1

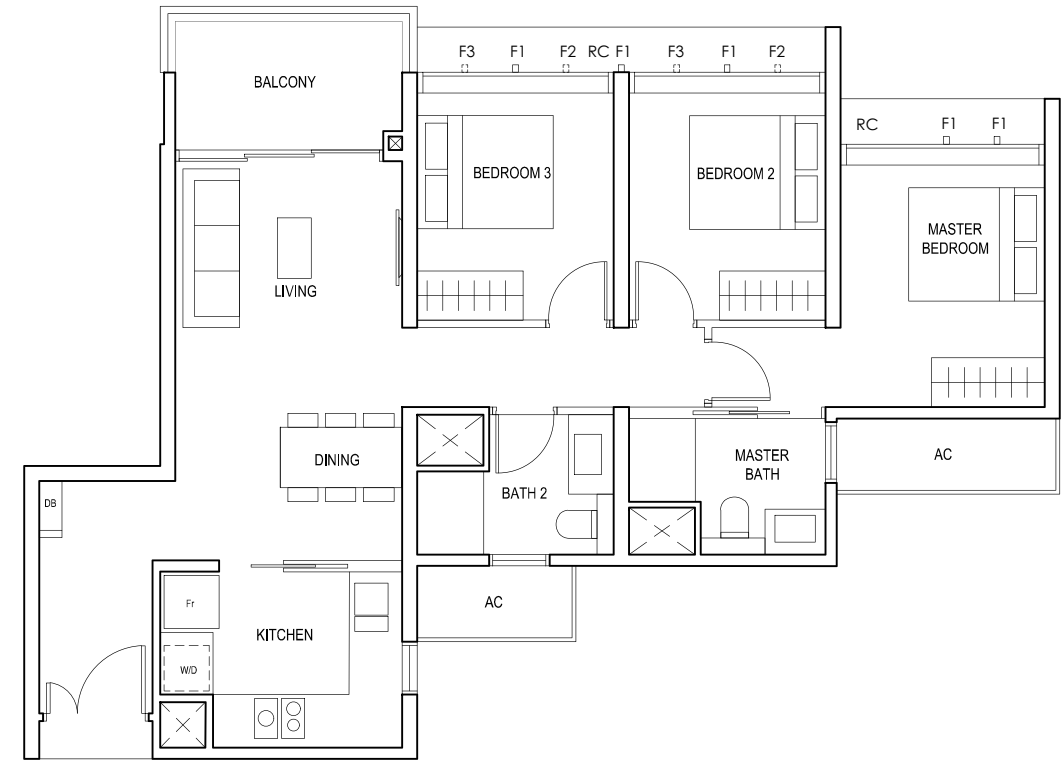
#05-02
88 sq m



F - FULL HEIGHT ALUMINIUM FIN

TYPE (3)f

#06-02 to #18-02
88 sq m

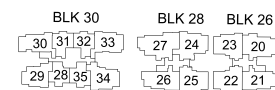
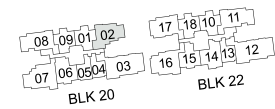


FULL HEIGHT ALUMINIUM FIN LOCATED AT LEVELS:

- F1 - #06 to #18
- F2 - #06, #09, #10, #13, #14, #17 & #18
- F3 - #07, #08, #11, #12, #15 & #16

LEGEND:
Fr - FRIDGE DB - DISTRIBUTION BOARD W/D - WASHER CUM DRYER
AC - AIRCON LEDGE PES - PRIVATE ENCLOSED SPACE RC - REINFORCED CONCRETE LEDGE

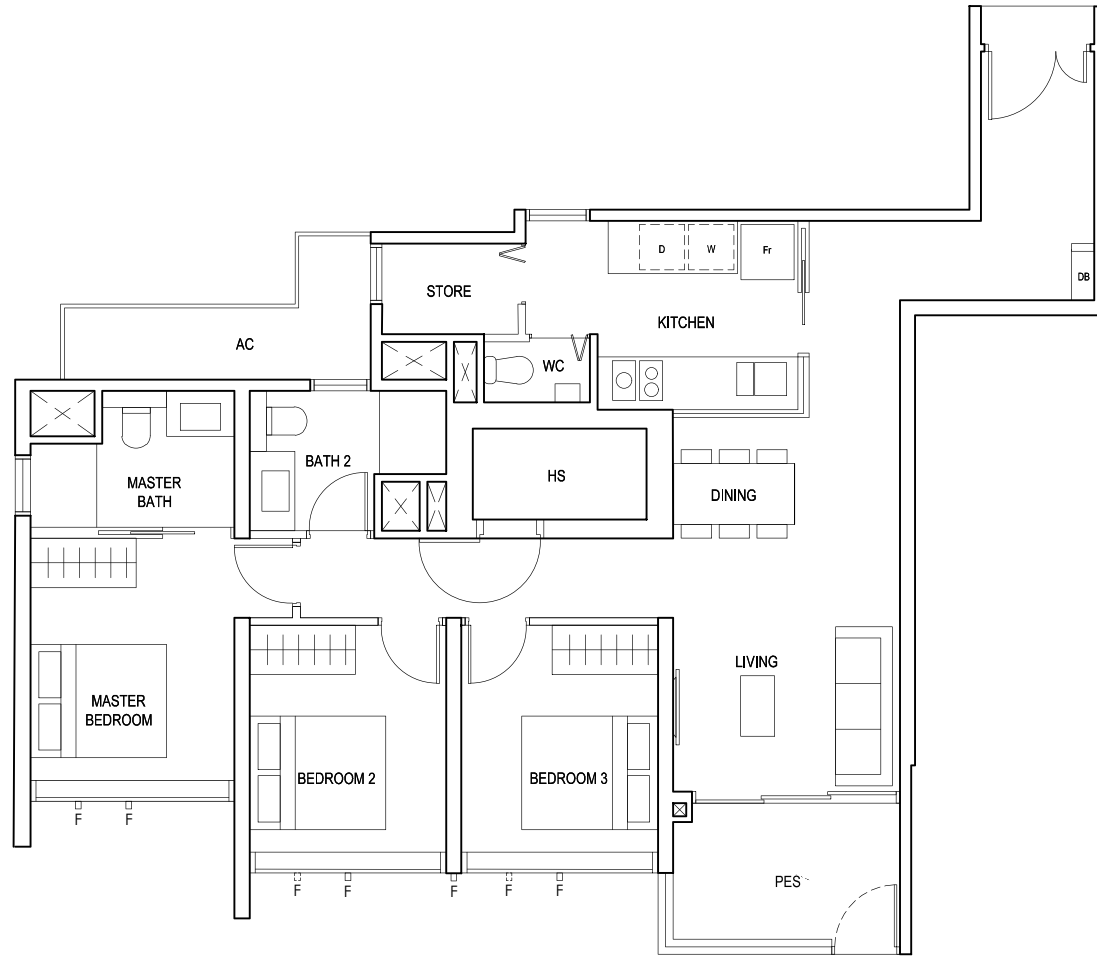
* AREA INCLUDES AIRCON (AC) LEDGE, BALCONY AND PRIVATE ENCLOSED SPACE (PES).
* THE BALCONY/PRIVATE ENCLOSED SPACE (PES) SHALL NOT BE ENCLOSED UNLESS WITH THE APPROVED BALCONY/PES SCREEN. FOR AN ILLUSTRATION OF THE APPROVED BALCONY/PES SCREEN, PLEASE REFER TO THE DIAGRAM ANNEXED HERETO AS "ANNEXURE 1".



3-BEDROOM PREMIUM

TYPE (3Y)a1

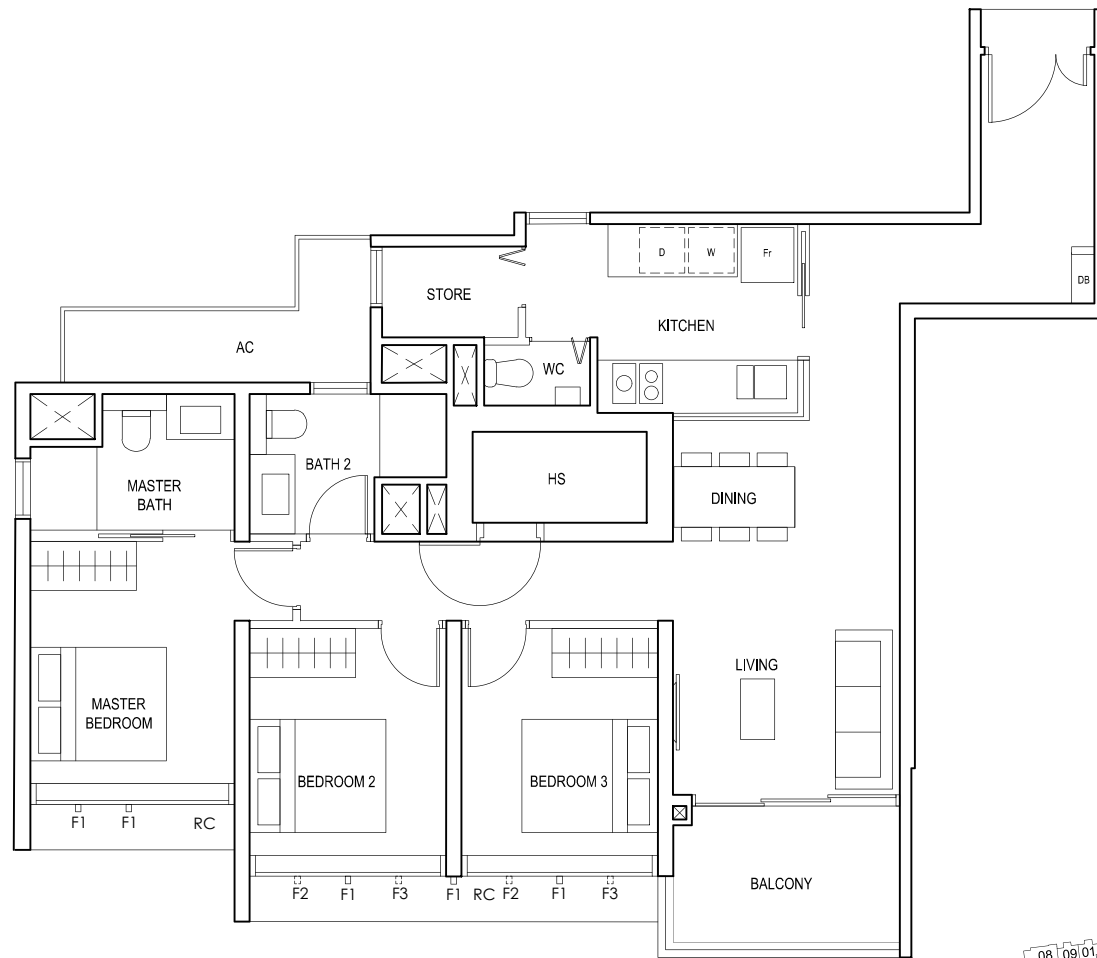
#01-16
102 sq m



F - FULL HEIGHT ALUMINIUM FIN

TYPE (3Y)a

#02-16 to #18-16
102 sq m



FULL HEIGHT ALUMINIUM FIN LOCATED AT LEVELS:
F1 - #02 to #18
F2 - #02, #05, #06, #09, #10, #13, #14, #17 & #18
F3 - #03, #04, #07, #08, #11, #12, #15 & #16

LEGEND:
Fr - FRIDGE DB - DISTRIBUTION BOARD WC - WATER CLOSET W - WASHER D - DRYER
AC - AIRCON LEDGE PES - PRIVATE ENCLOSED SPACE RC - REINFORCED CONCRETE LEDGE HS - HOUSEHOLD SHELTER

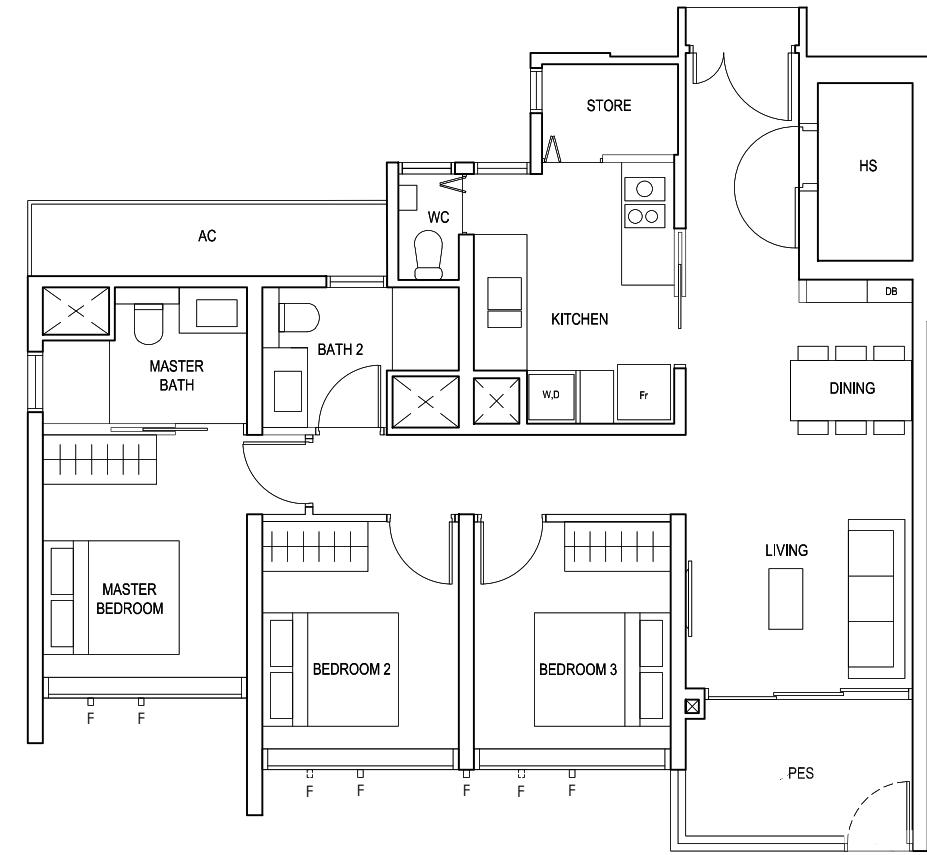
* AREA INCLUDES AIRCON (AC) LEDGE, BALCONY AND PRIVATE ENCLOSED SPACE (PES).
* THE BALCONY/PRIVATE ENCLOSED SPACE (PES) SHALL NOT BE ENCLOSED UNLESS WITH THE APPROVED BALCONY/PES SCREEN. FOR AN ILLUSTRATION OF THE APPROVED BALCONY/PES SCREEN, PLEASE REFER TO THE DIAGRAM ANNEXED HERETO AS "ANNEXURE 1".



3-BEDROOM PREMIUM

TYPE (3Y)b1

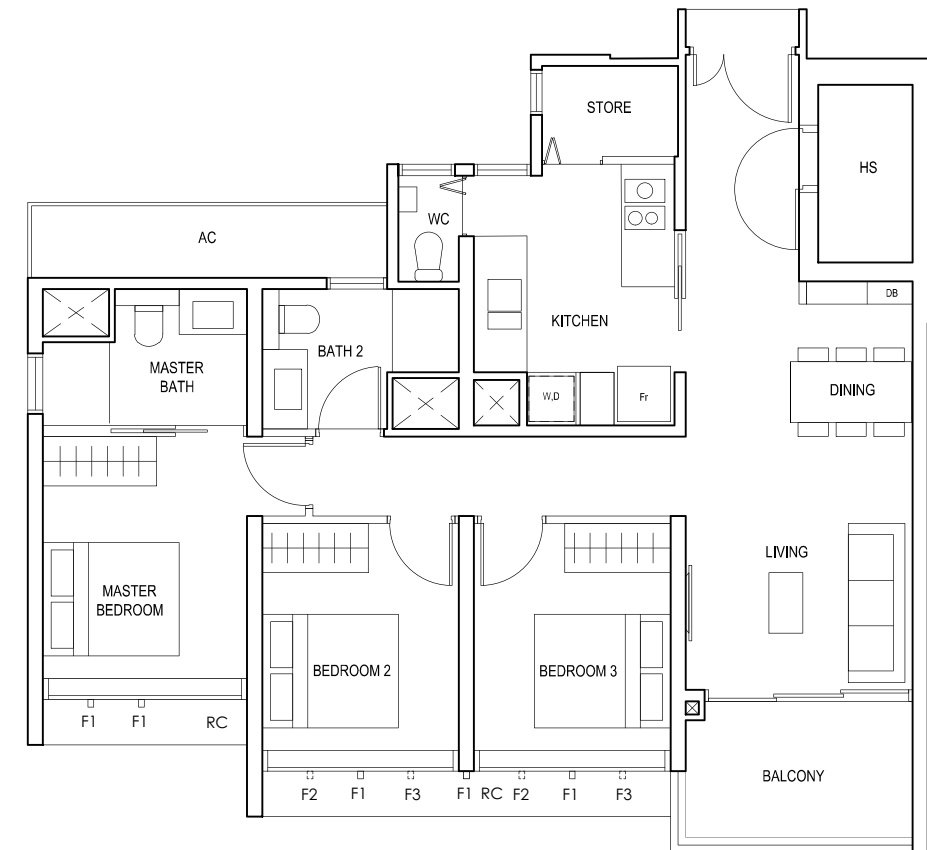
#01-22
98 sq m



F - FULL HEIGHT ALUMINIUM FIN

TYPE (3Y)b

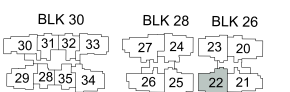
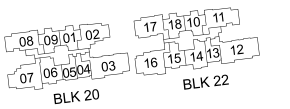
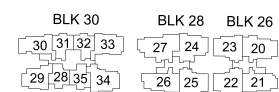
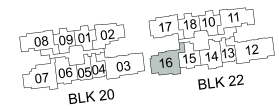
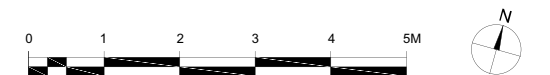
#02-22 to #18-22
98 sq m



FULL HEIGHT ALUMINIUM FIN LOCATED AT LEVELS:
F1 - #02 to #18
F2 - #02, #05, #06, #09, #10, #13, #14, #17 & #18
F3 - #03, #04, #07, #08, #11, #12, #15 & #16

LEGEND:
Fr - FRIDGE DB - DISTRIBUTION BOARD WC - WATER CLOSET W - WASHER D - DRYER
AC - AIRCON LEDGE PES - PRIVATE ENCLOSED SPACE RC - REINFORCED CONCRETE LEDGE HS - HOUSEHOLD SHELTER

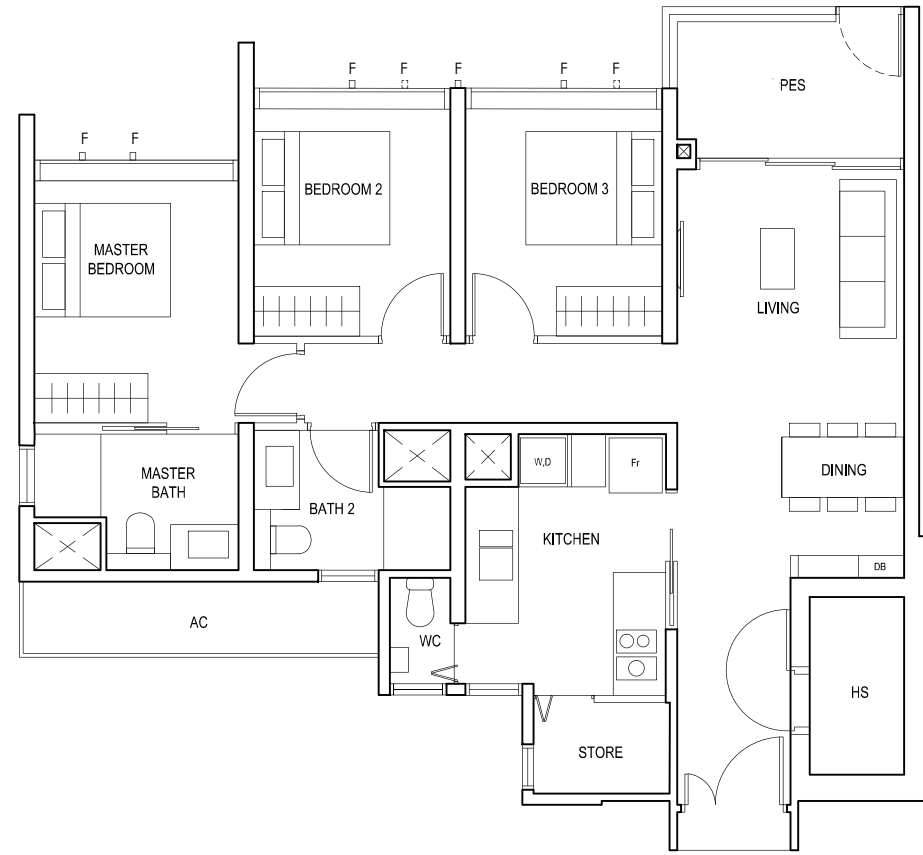
* AREA INCLUDES AIRCON (AC) LEDGE, BALCONY AND PRIVATE ENCLOSED SPACE (PES).
* THE BALCONY/PRIVATE ENCLOSED SPACE (PES) SHALL NOT BE ENCLOSED UNLESS WITH THE APPROVED BALCONY/PES SCREEN. FOR AN ILLUSTRATION OF THE APPROVED BALCONY/PES SCREEN, PLEASE REFER TO THE DIAGRAM ANNEXED HERETO AS "ANNEXURE 1".



3-BEDROOM PREMIUM

TYPE (3Y)b1

#01-23
98 sq m

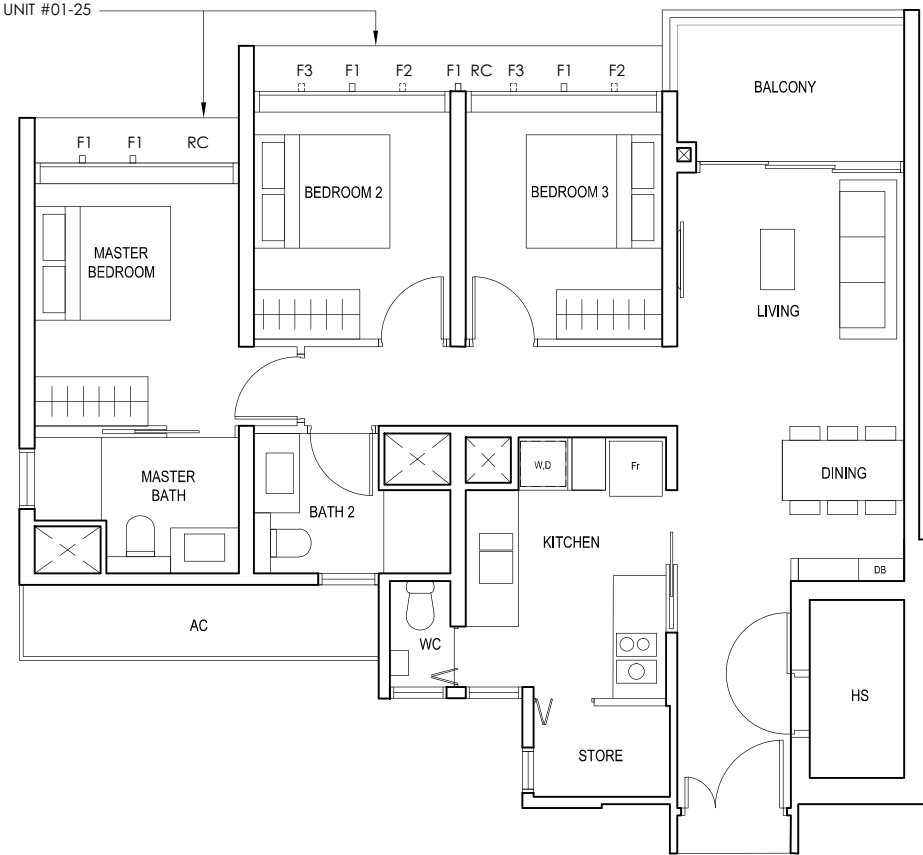


F - FULL HEIGHT ALUMINIUM FIN

TYPE (3Y)b

#02-23 to #18-23
#01-25 to #18-25
98 sq m

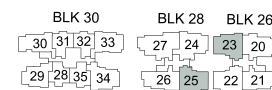
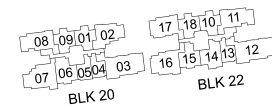
NOT APPLICABLE TO UNIT #01-25



FULL HEIGHT ALUMINIUM FIN LOCATED AT LEVELS:
F1 - #01 to #18
F2 - #01, #02, #05, #06, #09, #10, #13, #14, #17 & #18
F3 - #03, #04, #07, #08, #11, #12, #15 & #16

LEGEND:
Fr - FRIDGE DB - DISTRIBUTION BOARD WC - WATER CLOSET W - WASHER D - DRYER
AC - AIRCON LEDGE PES - PRIVATE ENCLOSED SPACE RC - REINFORCED CONCRETE LEDGE HS - HOUSEHOLD SHELTER

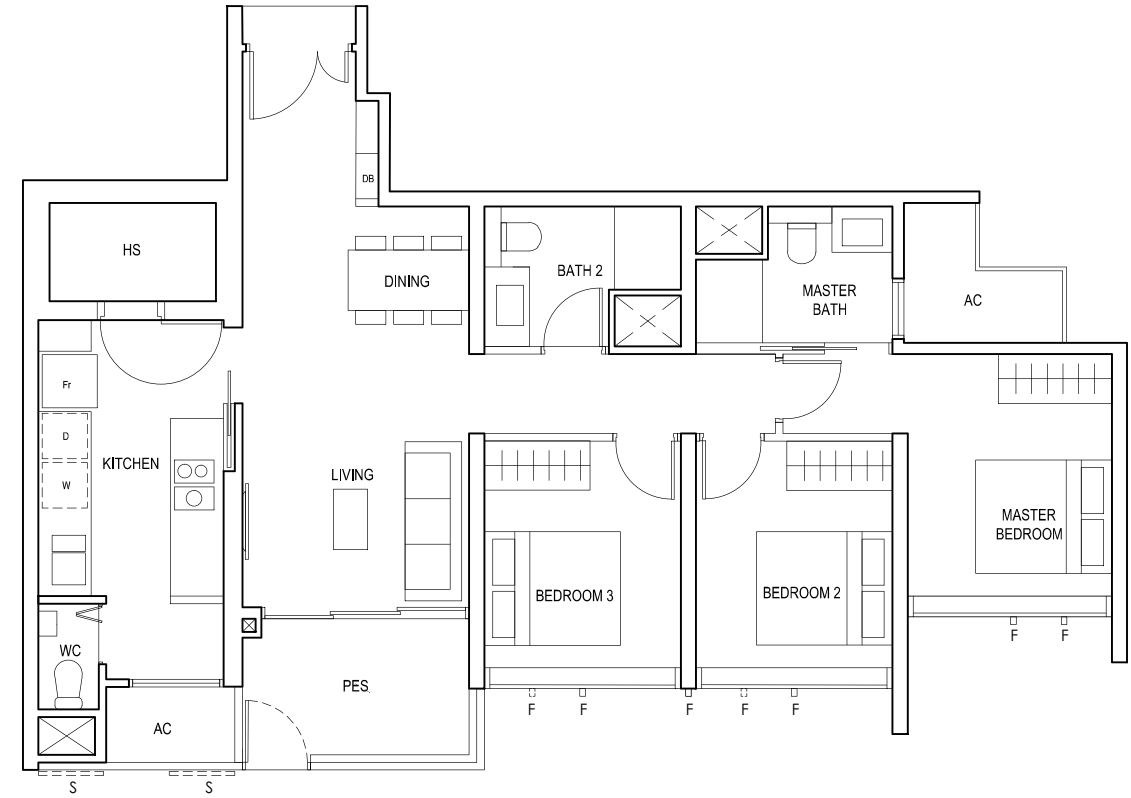
* AREA INCLUDES AIRCON (AC) LEDGE, BALCONY AND PRIVATE ENCLOSED SPACE (PES).
* THE BALCONY/PRIVATE ENCLOSED SPACE (PES) SHALL NOT BE ENCLOSED UNLESS WITH THE APPROVED BALCONY/PES SCREEN. FOR AN ILLUSTRATION OF THE APPROVED BALCONY/PES SCREEN, PLEASE REFER TO THE DIAGRAM ANNEXED HERETO AS "ANNEXURE 1".



3-BEDROOM PREMIUM

TYPE (3Y)c1

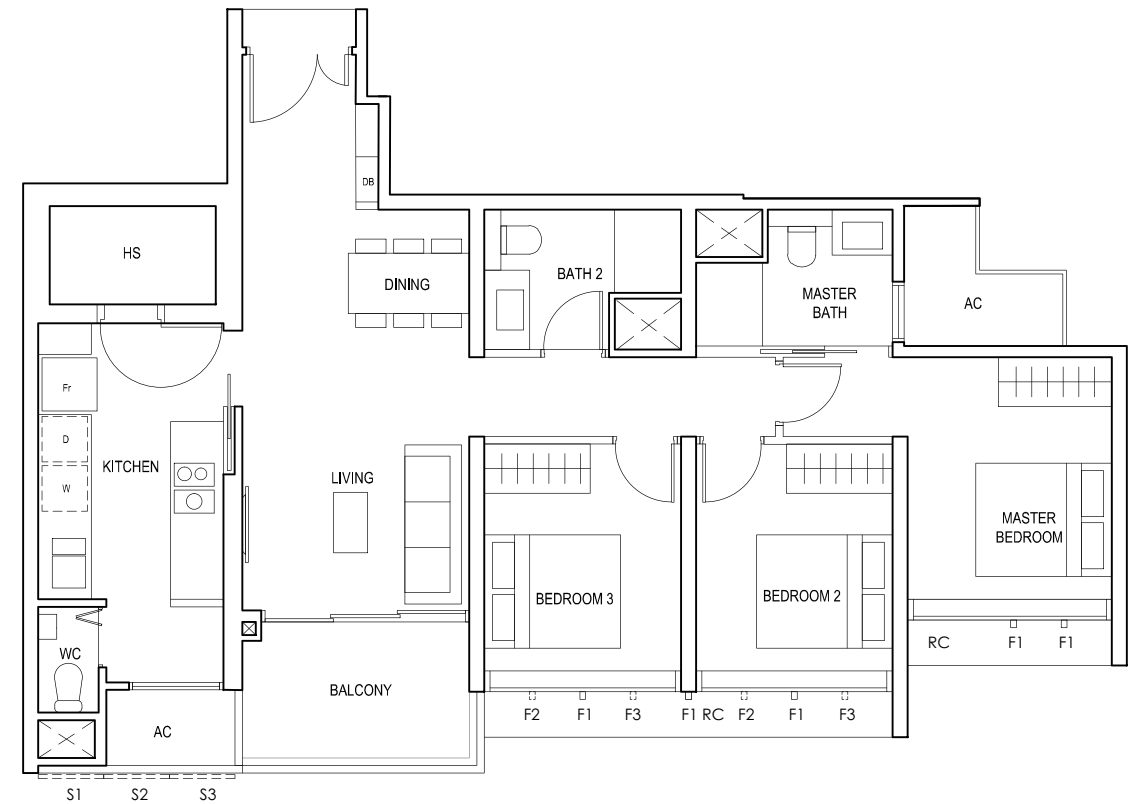
#01-21
97 sq m



S - FULL HEIGHT ALUMINIUM PERFORATED SCREEN
F - FULL HEIGHT ALUMINIUM FIN

TYPE (3Y)c

#02-21 to #18-21
97 sq m

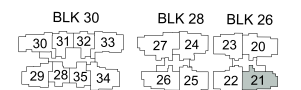
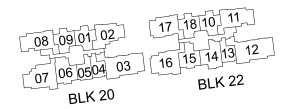
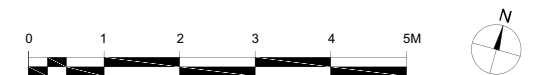


FULL HEIGHT ALUMINIUM PERFORATED SCREEN LOCATED AT LEVELS:
S1 - #02, #03, #05, #06, #07, #09, #10, #11, #13, #14, #15, #17 & #18
S2 - #02, #04, #06, #08, #10, #12, #14, #16 & #18
S3 - #03, #04, #05, #07, #08, #09, #11, #12, #13, #15, #16, #17

FULL HEIGHT ALUMINIUM FIN LOCATED AT LEVELS:
F1 - #02 to #18
F2 - #02, #05, #06, #09, #10, #13, #14, #17 & #18
F3 - #03, #04, #07, #08, #11, #12, #15 & #16

LEGEND:
Fr - FRIDGE DB - DISTRIBUTION BOARD WC - WATER CLOSET W - WASHER D - DRYER
AC - AIRCON LEDGE PES - PRIVATE ENCLOSED SPACE RC - REINFORCED CONCRETE LEDGE HS - HOUSEHOLD SHELTER

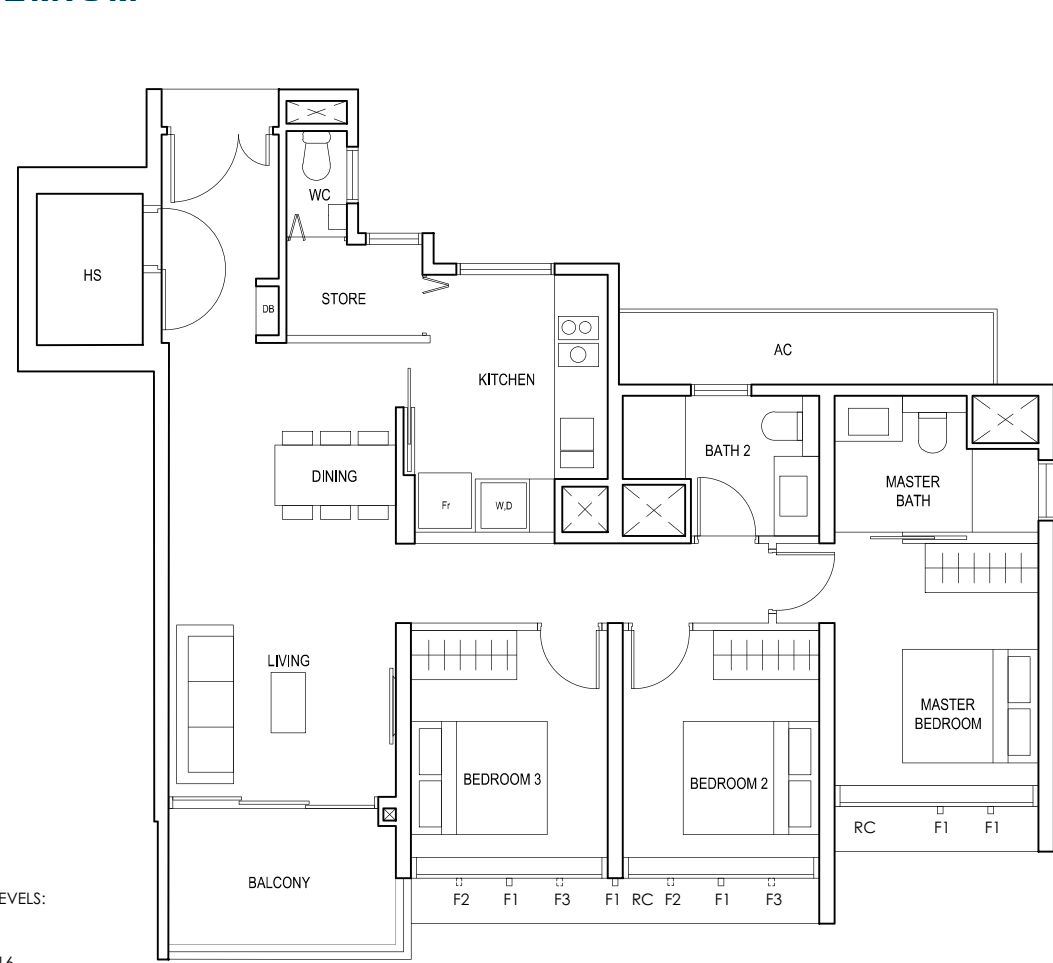
* AREA INCLUDES AIRCON (AC) LEDGE, BALCONY AND PRIVATE ENCLOSED SPACE (PES).
* THE BALCONY/PRIVATE ENCLOSED SPACE (PES) SHALL NOT BE ENCLOSED UNLESS WITH THE APPROVED BALCONY/PES SCREEN. FOR AN ILLUSTRATION OF THE APPROVED BALCONY/PES SCREEN, PLEASE REFER TO THE DIAGRAM ANNEXED HERETO AS "ANNEXURE 1".



3-BEDROOM PREMIUM

TYPE (3Y)d

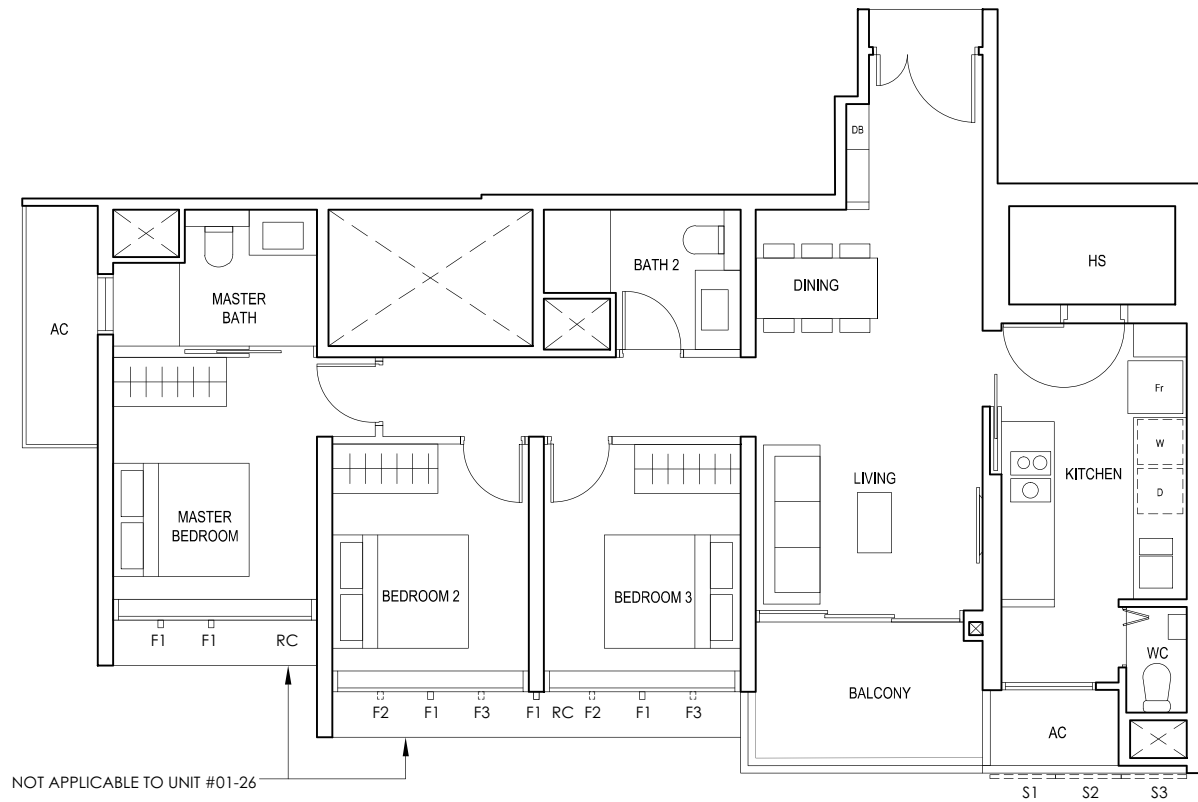
#03-34 to #17-34
99 sq m



FULL HEIGHT ALUMINIUM FIN LOCATED AT LEVELS:
F1 - #03 to #17
F2 - #05, #06, #09, #10, #13, #14, #17
F3 - #03, #04, #07, #08, #11, #12, #15 & #16

TYPE (3Y)e

#01-26 to #18-26
97 sq m

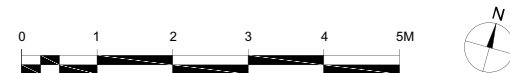


FULL HEIGHT ALUMINIUM PERFORATED SCREEN LOCATED AT LEVELS:
S1 - #01, #02, #03, #05, #06, #07, #09, #10, #11, #13, #14, #15, #17 & #18
S2 - #02, #04, #06, #08, #10, #12, #14, #16 & #18
S3 - #01, #03, #04, #05, #07, #08, #09, #11, #12, #13, #15, #16, #17

FULL HEIGHT ALUMINIUM FIN LOCATED AT LEVELS:
F1 - #01 to #18
F2 - #01, #02, #05, #06, #09, #10, #13, #14, #17 & #18
F3 - #03, #04, #07, #08, #11, #12, #15 & #16

LEGEND:
Fr - FRIDGE DB - DISTRIBUTION BOARD WC - WATER CLOSET W - WASHER D - DRYER
AC - AIRCON LEDGE RC - REINFORCED CONCRETE LEDGE HS - HOUSEHOLD SHELTER

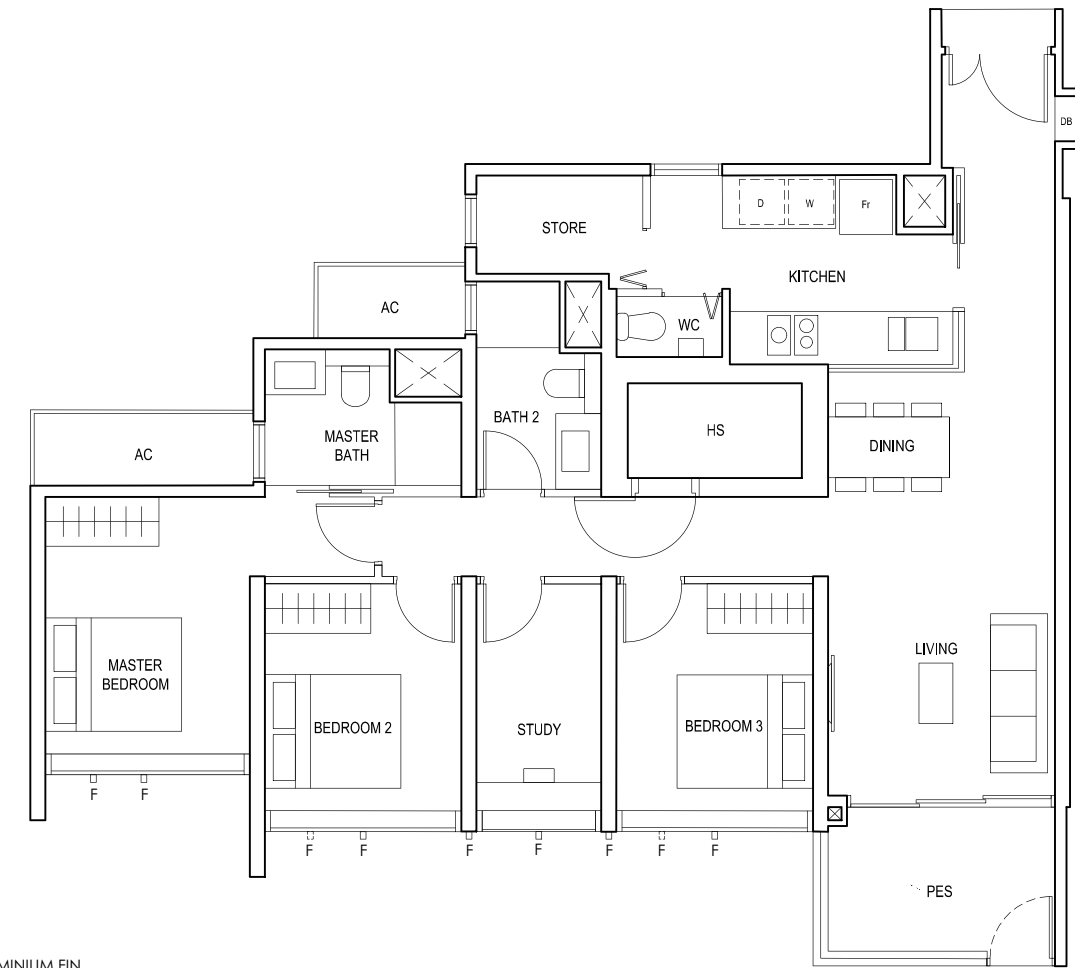
* AREA INCLUDES AIRCON (AC) LEDGE, BALCONY AND PRIVATE ENCLOSED SPACE (PES).
* THE BALCONY/PRIVATE ENCLOSED SPACE (PES) SHALL NOT BE ENCLOSED UNLESS WITH THE APPROVED BALCONY/PES SCREEN. FOR AN ILLUSTRATION OF THE APPROVED BALCONY/PES SCREEN, PLEASE REFER TO THE DIAGRAM ANNEXED HERETO AS "ANNEXURE 1".



3-BEDROOM (with Study)

TYPE (3+1)a1

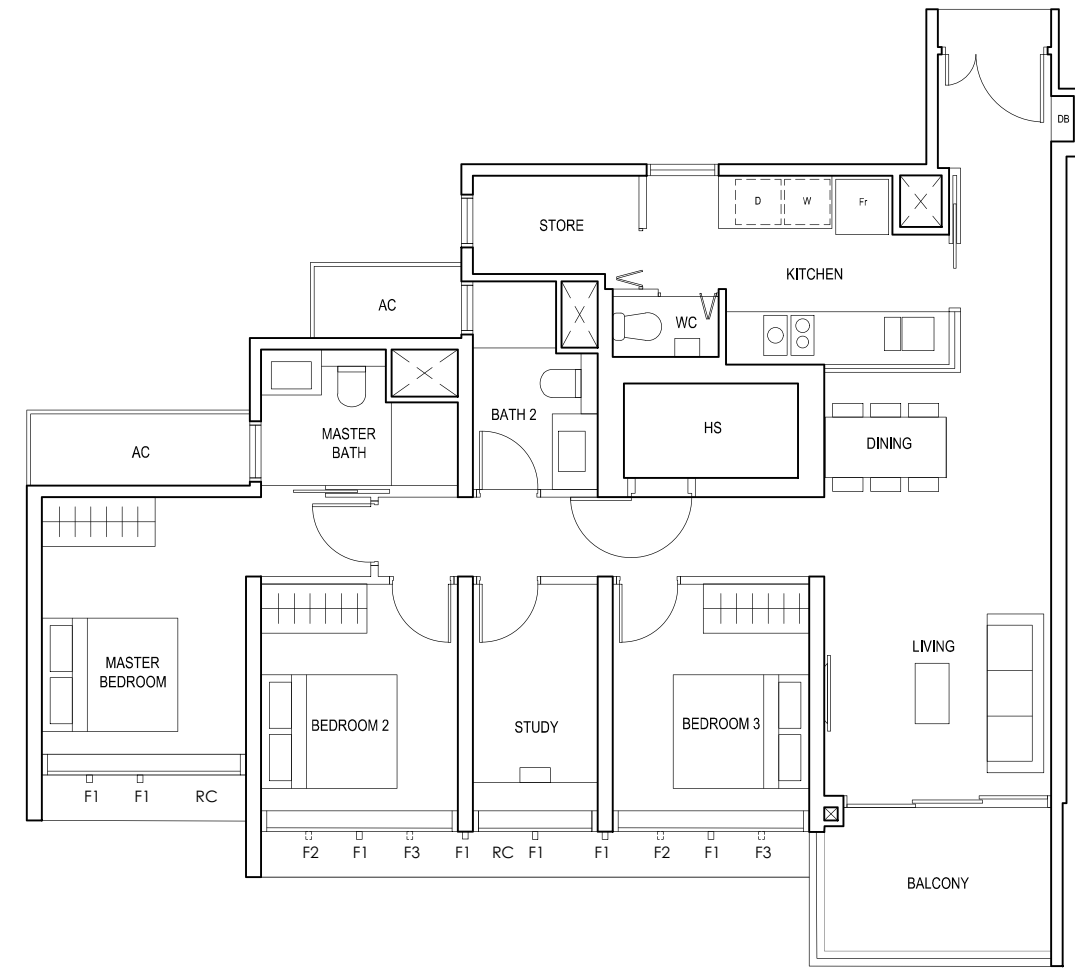
#01-07
110 sq m



F - FULL HEIGHT ALUMINIUM FIN

TYPE (3+1)a

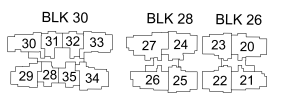
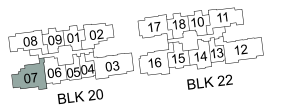
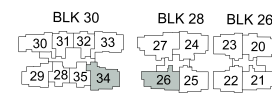
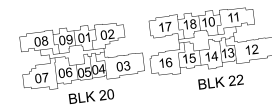
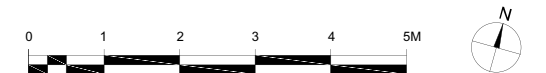
#02-07 to #18-07
110 sq m



FULL HEIGHT ALUMINIUM FIN LOCATED AT LEVELS:
F1 - #02 to #18
F2 - #02, #05, #06, #09, #10, #13, #14, #17 & #18
F3 - #03, #04, #07, #08, #11, #12, #15 & #16

LEGEND:
Fr - FRIDGE DB - DISTRIBUTION BOARD WC - WATER CLOSET W - WASHER D - DRYER
AC - AIRCON LEDGE PES - PRIVATE ENCLOSED SPACE RC - REINFORCED CONCRETE LEDGE HS - HOUSEHOLD SHELTER

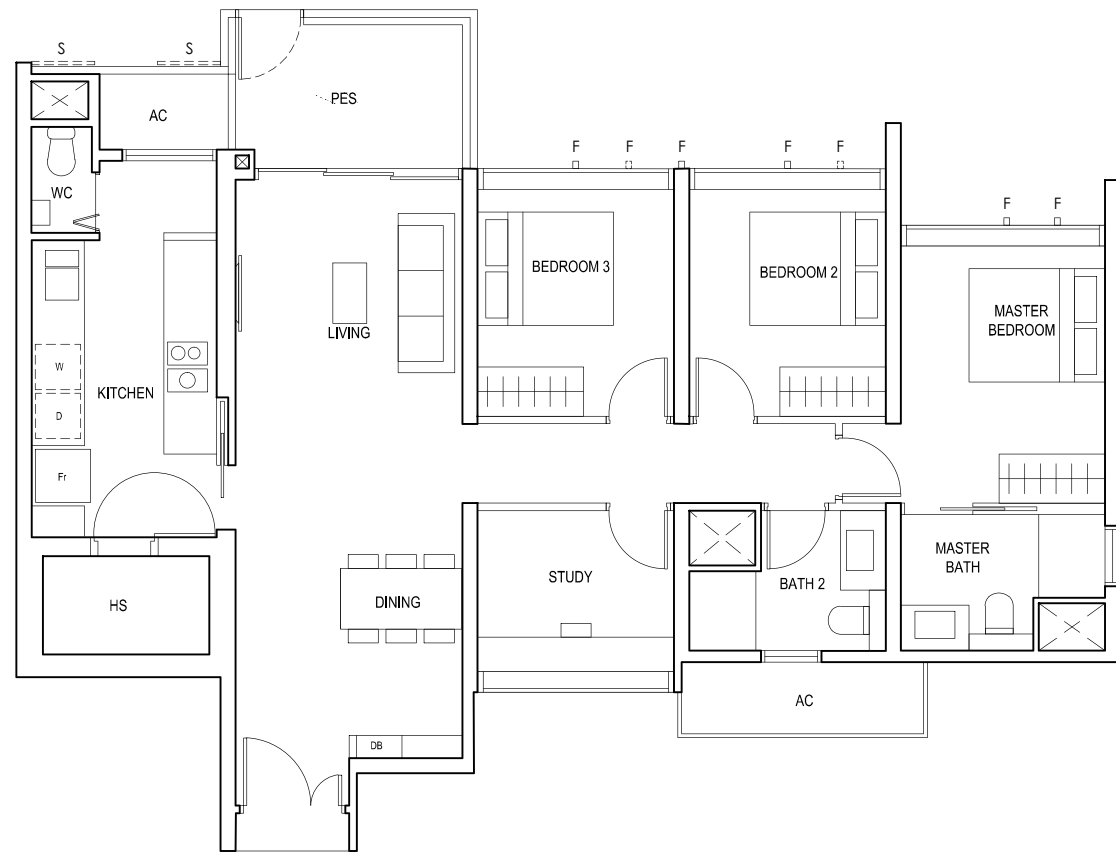
* AREA INCLUDES AIRCON (AC) LEDGE, BALCONY AND PRIVATE ENCLOSED SPACE (PES).
* THE BALCONY/PRIVATE ENCLOSED SPACE (PES) SHALL NOT BE ENCLOSED UNLESS WITH THE APPROVED BALCONY/PES SCREEN. FOR AN ILLUSTRATION OF THE APPROVED BALCONY/PES SCREEN, PLEASE REFER TO THE DIAGRAM ANNEXED HERETO AS "ANNEXURE 1".



3-BEDROOM (with Study)

TYPE (3+1)b1

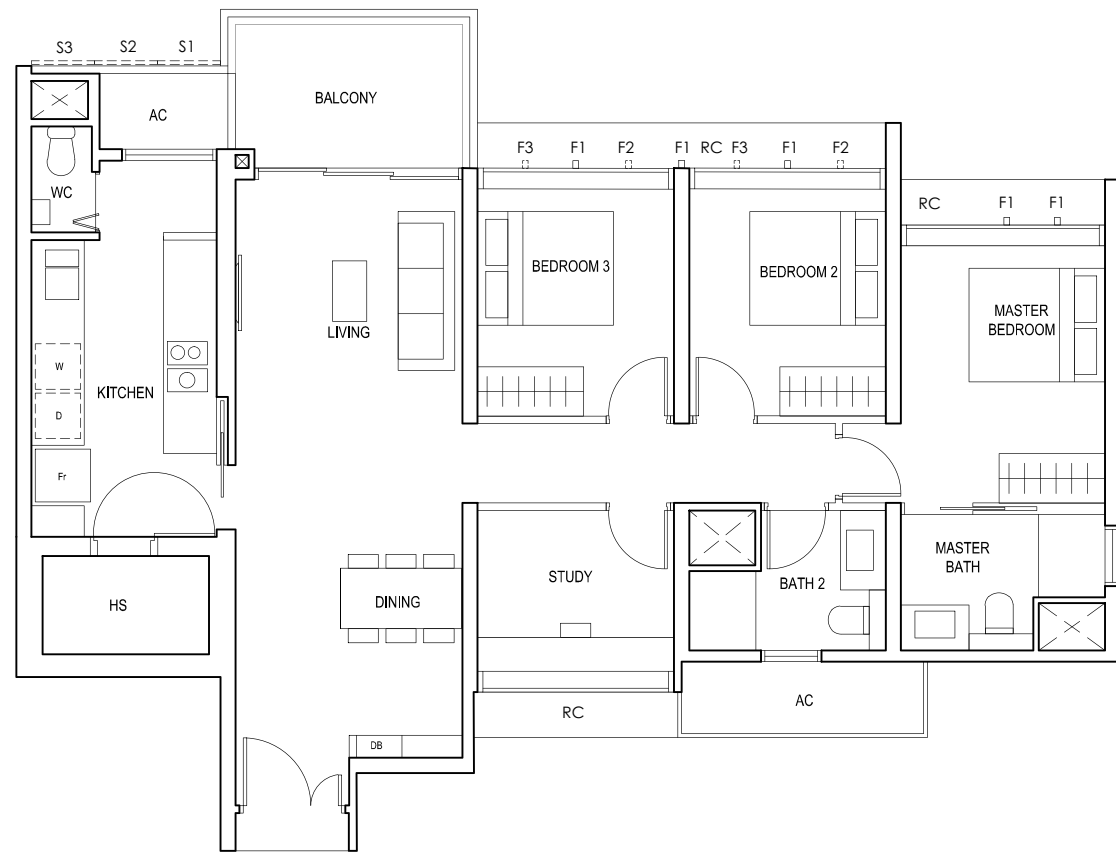
#01-20
110 sq m



S - FULL HEIGHT ALUMINIUM PERFORATED SCREEN
F - FULL HEIGHT ALUMINIUM FIN

TYPE (3+1)b

#02-20 to #18-20
110 sq m

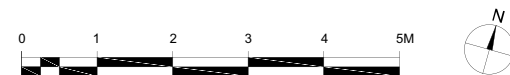


FULL HEIGHT ALUMINIUM PERFORATED SCREEN LOCATED AT LEVELS:
S1 - #02, #03, #05, #06, #07, #09, #10, #11, #13, #14, #15, #17 & #18
S2 - #02, #04, #06, #08, #10, #12, #14, #16 & #18
S3 - #03, #04, #05, #07, #08, #09, #11, #12, #13, #15, #16, #17

FULL HEIGHT ALUMINIUM FIN LOCATED AT LEVELS:
F1 - #02 to #18
F2 - #02, #05, #06, #09, #10, #13, #14, #17 & #18
F3 - #03, #04, #07, #08, #11, #12, #15 & #16

LEGEND:
Fr - FRIDGE DB - DISTRIBUTION BOARD WC - WATER CLOSET W - WASHER D - DRYER
AC - AIRCON LEDGE PES - PRIVATE ENCLOSED SPACE RC - REINFORCED CONCRETE LEDGE HS - HOUSEHOLD SHELTER

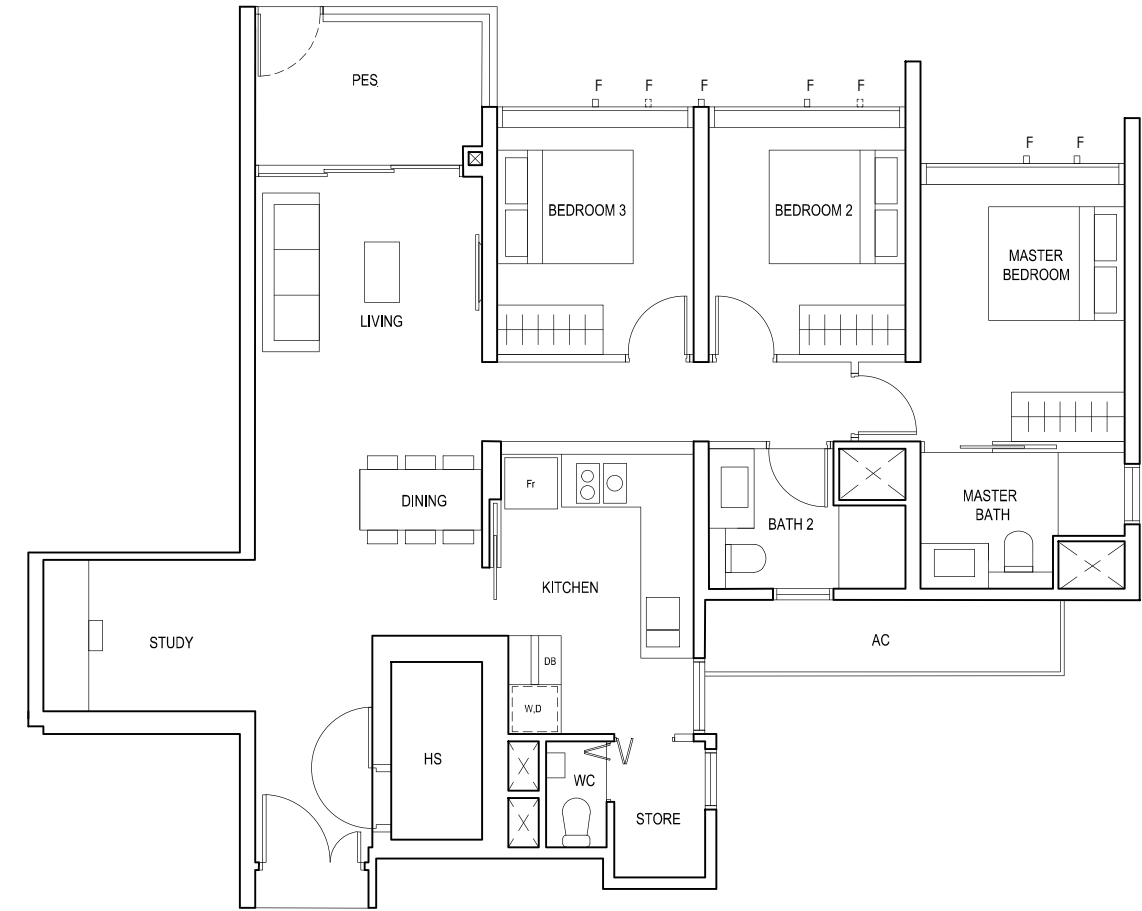
* AREA INCLUDES AIRCON (AC) LEDGE, BALCONY AND PRIVATE ENCLOSED SPACE (PES).
* THE BALCONY/PRIVATE ENCLOSED SPACE (PES) SHALL NOT BE ENCLOSED UNLESS WITH THE APPROVED BALCONY/PES SCREEN. FOR AN ILLUSTRATION OF THE APPROVED BALCONY/PES SCREEN, PLEASE REFER TO THE DIAGRAM ANNEXED HERETO AS "ANNEXURE 1".



3-BEDROOM (with Study)

TYPE (3+1)c1

#01-24
109 sq m



F - FULL HEIGHT ALUMINIUM FIN

TYPE(3+1)c

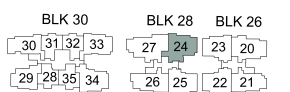
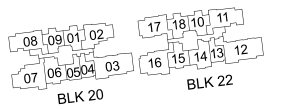
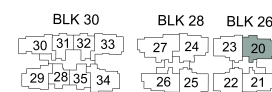
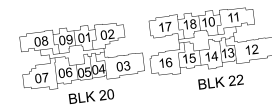
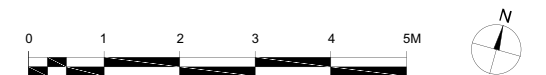
#02-24 to #18-24
109 sq m



FULL HEIGHT ALUMINIUM FIN LOCATED AT LEVELS:
F1 - #02 to #18
F2 - #02, #05, #06, #09, #10, #13, #14, #17 & #18
F3 - #03, #04, #07, #08, #11, #12, #15 & #16

LEGEND:
Fr - FRIDGE DB - DISTRIBUTION BOARD WC - WATER CLOSET W - WASHER D - DRYER
AC - AIRCON LEDGE PES - PRIVATE ENCLOSED SPACE RC - REINFORCED CONCRETE LEDGE HS - HOUSEHOLD SHELTER

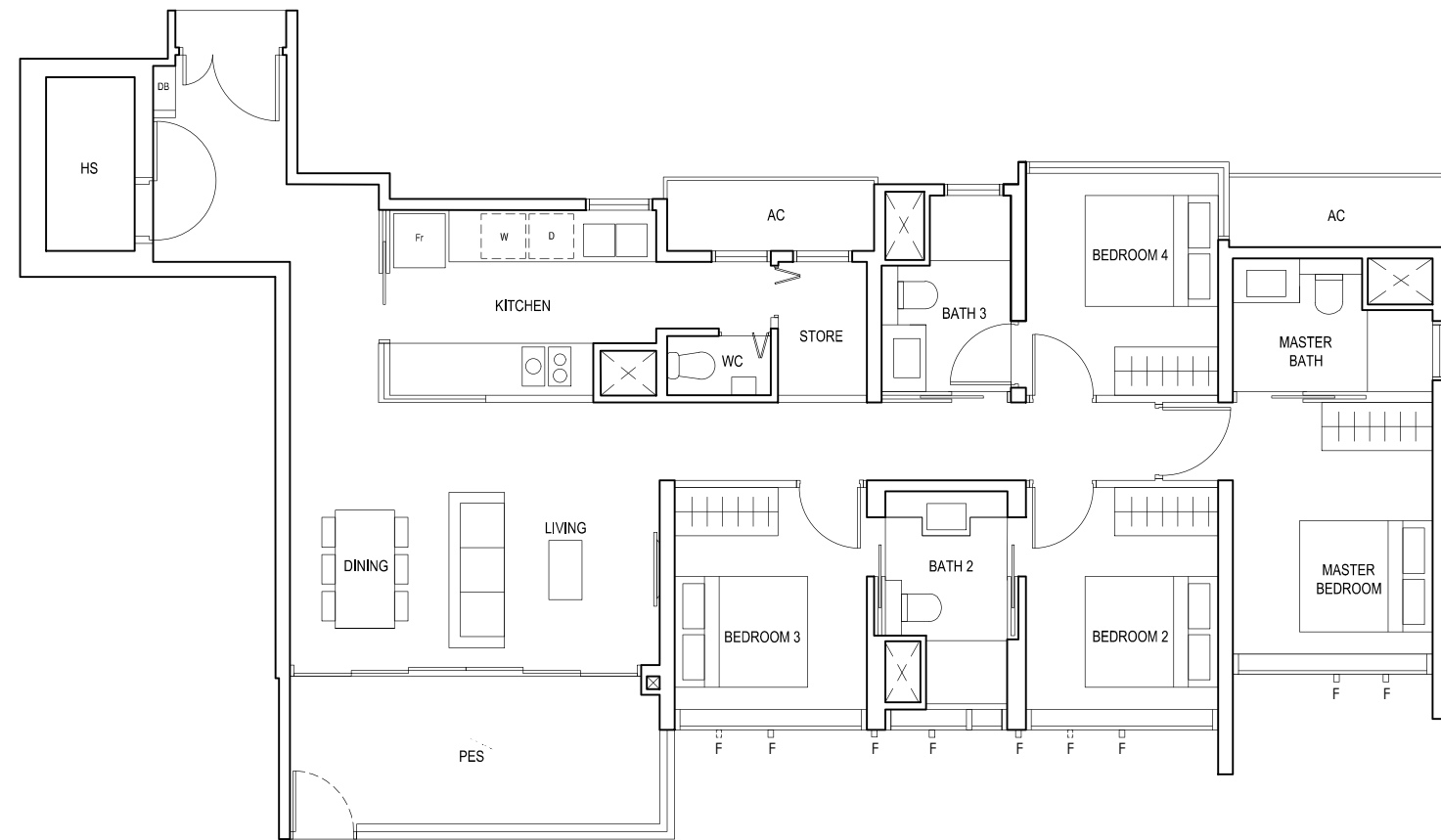
* AREA INCLUDES AIRCON (AC) LEDGE, BALCONY AND PRIVATE ENCLOSED SPACE (PES).
* THE BALCONY/PRIVATE ENCLOSED SPACE (PES) SHALL NOT BE ENCLOSED UNLESS WITH THE APPROVED BALCONY/PES SCREEN. FOR AN ILLUSTRATION OF THE APPROVED BALCONY/PES SCREEN, PLEASE REFER TO THE DIAGRAM ANNEXED HERETO AS "ANNEXURE 1".



4-BEDROOM

TYPE (4)a1

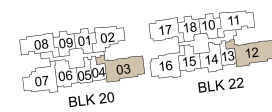
#01-03
#01-12
129 sq m



F - FULL HEIGHT ALUMINIUM FIN

LEGEND:
Fr - FRIDGE DB - DISTRIBUTION BOARD WC - WATER CLOSET W - WASHER D - DRYER
AC - AIRCON LEDGE PES - PRIVATE ENCLOSED SPACE HS - HOUSEHOLD SHELTER

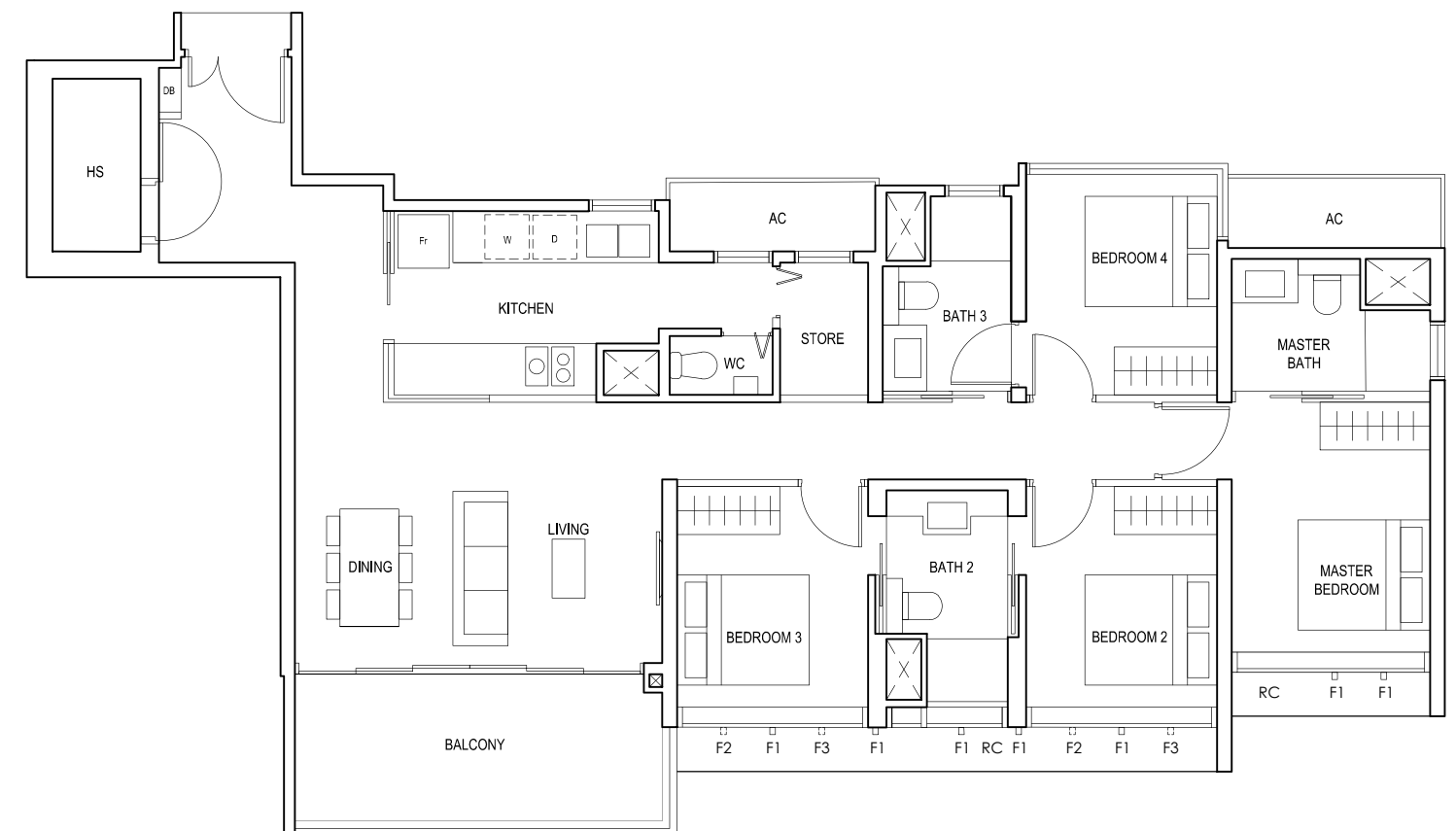
* AREA INCLUDES AIRCON (AC) LEDGE, BALCONY AND PRIVATE ENCLOSED SPACE (PES).
* THE BALCONY/PRIVATE ENCLOSED SPACE (PES) SHALL NOT BE ENCLOSED UNLESS WITH THE APPROVED BALCONY/PES SCREEN. FOR AN ILLUSTRATION OF THE APPROVED BALCONY/PES SCREEN, PLEASE REFER TO THE DIAGRAM ANNEXED HERETO AS "ANNEXURE 1".



4-BEDROOM

TYPE(4)a

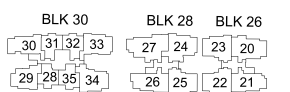
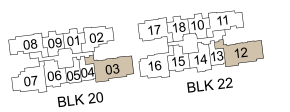
#02-03 to #18-03
#02-12 to #18-12
129 sq m



FULL HEIGHT ALUMINIUM FIN LOCATED AT LEVELS:
F1 - #02 to #18
F2 - #02, #05, #06, #09, #10, #13, #14, #17 & #18
F3 - #03, #04, #07, #08, #11, #12, #15 & #16

LEGEND:
Fr - FRIDGE DB - DISTRIBUTION BOARD WC - WATER CLOSET W - WASHER D - DRYER
AC - AIRCON LEDGE RC - REINFORCED CONCRETE LEDGE HS - HOUSEHOLD SHELTER

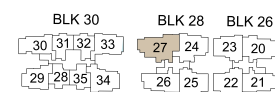
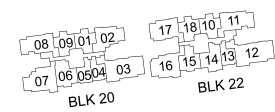
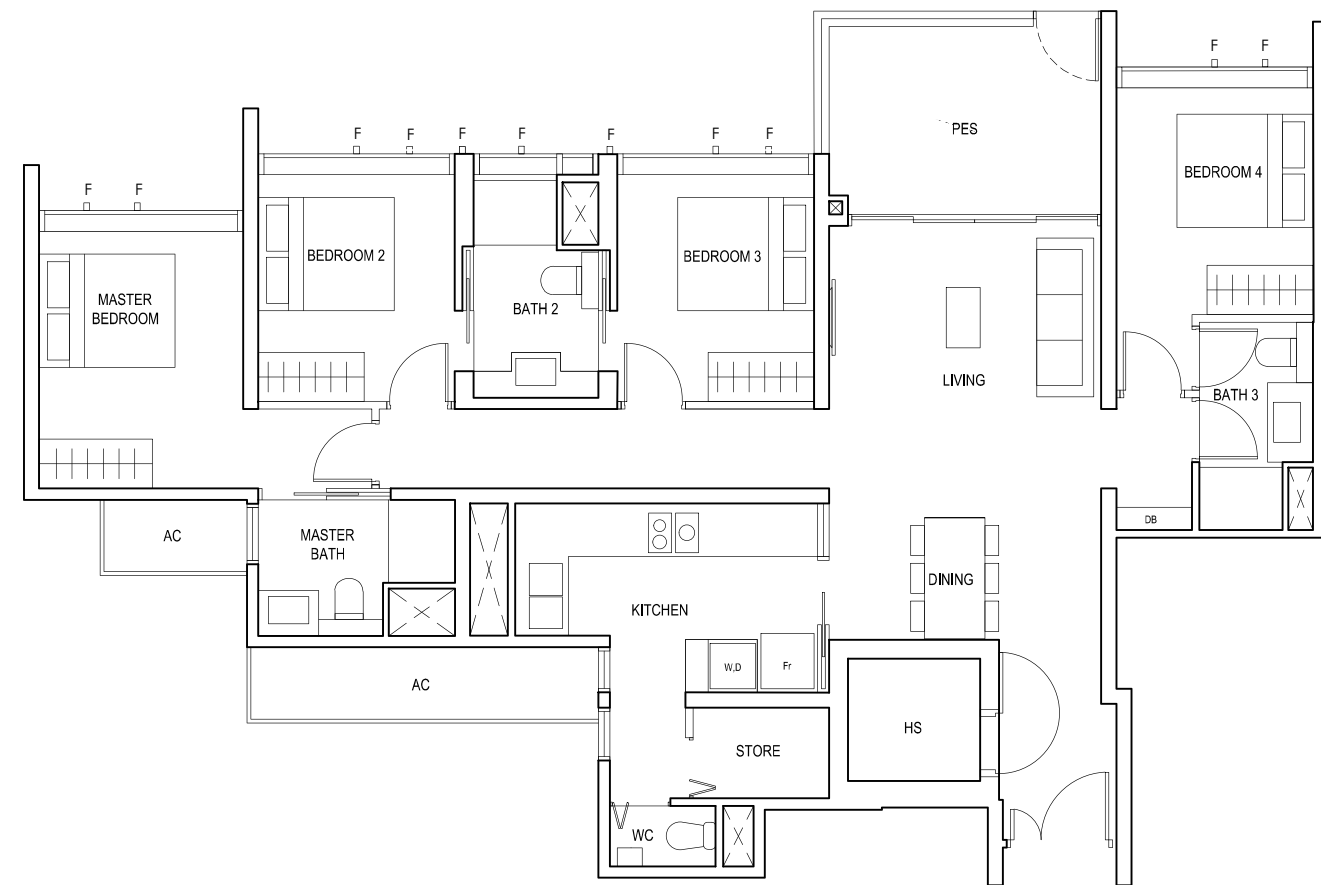
* AREA INCLUDES AIRCON (AC) LEDGE, BALCONY AND PRIVATE ENCLOSED SPACE (PES).
* THE BALCONY/PRIVATE ENCLOSED SPACE (PES) SHALL NOT BE ENCLOSED UNLESS WITH THE APPROVED BALCONY/PES SCREEN. FOR AN ILLUSTRATION OF THE APPROVED BALCONY/PES SCREEN, PLEASE REFER TO THE DIAGRAM ANNEXED HERETO AS "ANNEXURE 1".



4-BEDROOM

TYPE(4)b1

#01-27
130 sq m



F - FULL HEIGHT ALUMINIUM FIN

LEGEND:
Fr - FRIDGE DB - DISTRIBUTION BOARD WC - WATER CLOSET W - WASHER D - DRYER
AC - AIRCON LEDGE PES - PRIVATE ENCLOSED SPACE HS - HOUSEHOLD SHELTER

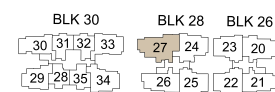
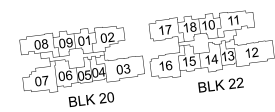
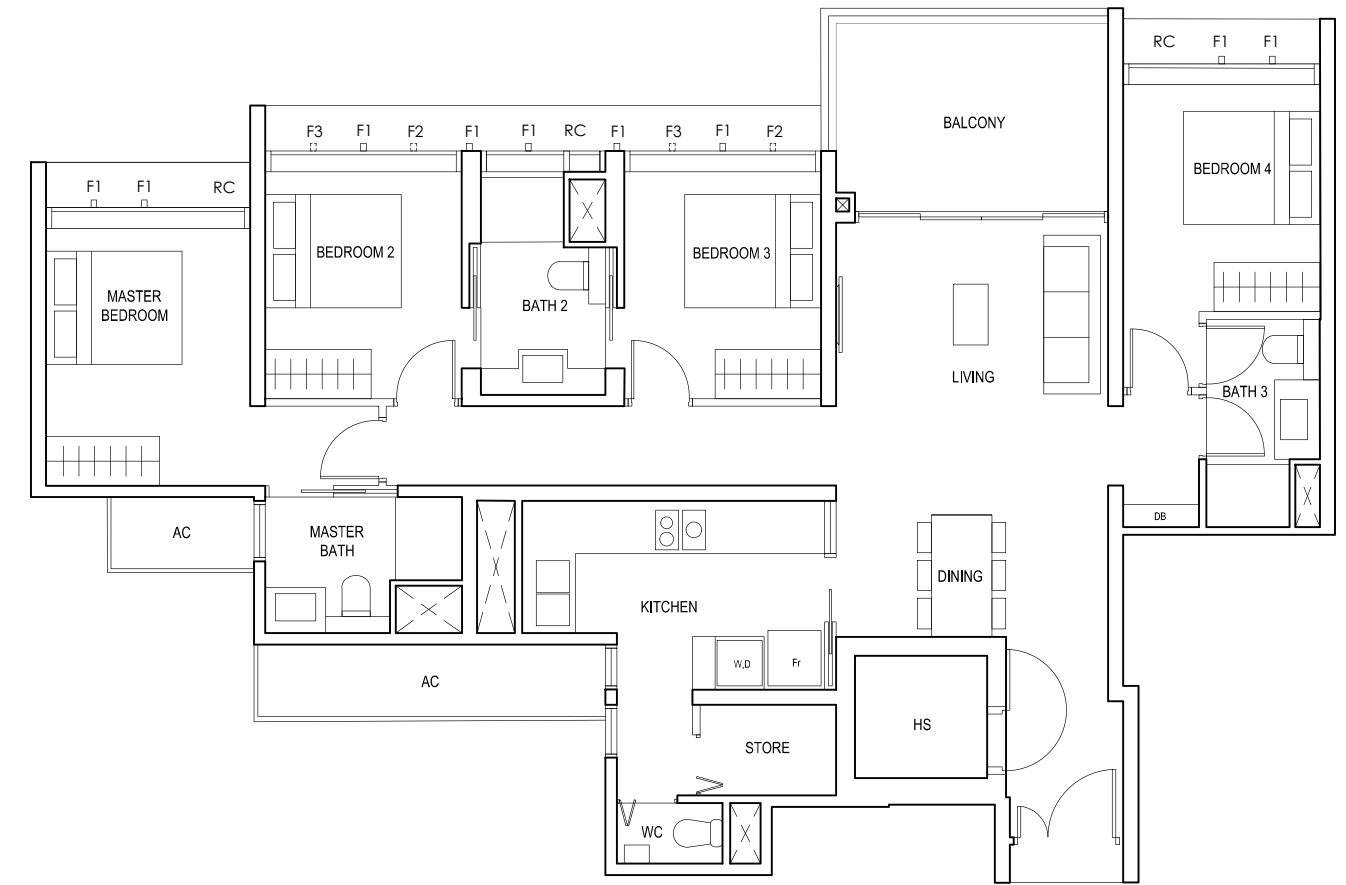
* AREA INCLUDES AIRCON (AC) LEDGE, BALCONY AND PRIVATE ENCLOSED SPACE (PES).
* THE BALCONY/PRIVATE ENCLOSED SPACE (PES) SHALL NOT BE ENCLOSED UNLESS WITH THE APPROVED BALCONY/PES SCREEN. FOR AN ILLUSTRATION OF THE APPROVED BALCONY/PES SCREEN, PLEASE REFER TO THE DIAGRAM ANNEXED HERETO AS "ANNEXURE 1".



4-BEDROOM

TYPE(4)b

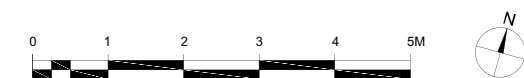
#02-27 to #18-27
130 sq m



FULL HEIGHT ALUMINIUM FIN LOCATED AT LEVELS:
F1 - #02 to #18
F2 - #02, #05, #06, #09, #10, #13, #14, #17 & #18
F3 - #03, #04, #07, #08, #11, #12, #15 & #16

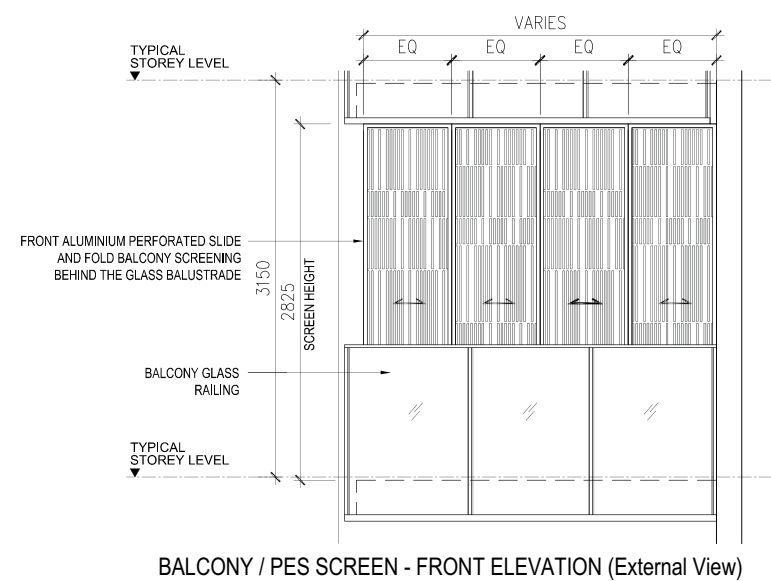
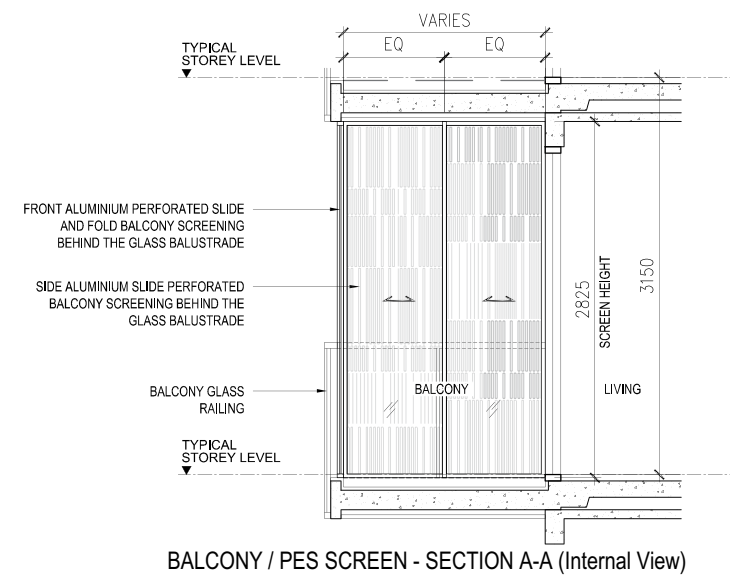
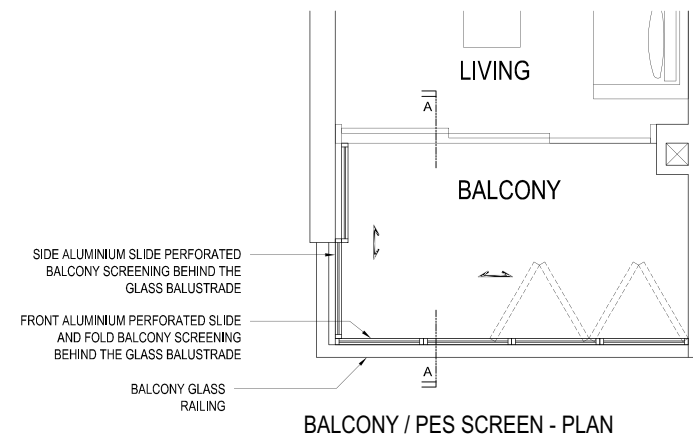
LEGEND:
Fr - FRIDGE DB - DISTRIBUTION BOARD WC - WATER CLOSET W - WASHER D - DRYER
AC - AIRCON LEDGE RC - REINFORCED CONCRETE LEDGE HS - HOUSEHOLD SHELTER

* AREA INCLUDES AIRCON (AC) LEDGE, BALCONY AND PRIVATE ENCLOSED SPACE (PES).
* THE BALCONY/PRIVATE ENCLOSED SPACE (PES) SHALL NOT BE ENCLOSED UNLESS WITH THE APPROVED BALCONY/PES SCREEN. FOR AN ILLUSTRATION OF THE APPROVED BALCONY/PES SCREEN, PLEASE REFER TO THE DIAGRAM ANNEXED HERETO AS "ANNEXURE 1".



ANNEXURE 1

APPROVED SCREEN FOR BALCONY AND PRIVATE ENCLOSED SPACE (PES)



- NOTES:
1. THE BALCONY / PES SHALL NOT BE ENCLOSED UNLESS WITH THE APPROVED SCREEN AS SHOWN ABOVE ("APPROVED SCREEN");
 2. BALCONY/ PES SCREEN IS NOT PROVIDED. THE COST OF SCREEN AND INSTALLATION OF THE APPROVED SCREEN SHALL BE BORNE BY THE PURCHASER; AND
 3. ON-SITE VERIFICATION IS NECESSARY TO OBTAIN ACTUAL MEASUREMENTS PRIOR TO FABRICATION AND INSTALLATION OF THE APPROVED SCREEN.

EQ - EQUIDISTANT

MARK OF PRECISION



Hong Leong Holdings Limited (HLHL) was established in 1968 as the privately-held property development and investment arm of the Hong Leong Group.

As one of the pioneers of the real estate scene in Singapore, HLHL has since emerged as a major player in the property market. As a forward-looking developer that continues to pursue improvement and expansion while maintaining its high design, customer service and sustainability standards, HLHL takes pride in being responsible for some of the most distinctive and iconic residential developments in Singapore.



City Developments Limited (CDL) is a leading global real estate company with a network spanning 106 locations in 29 countries and regions. Listed on the Singapore Exchange, the Group is one of the largest companies by market capitalisation. Its income-stable and geographically-diverse portfolio comprises residences, offices, hotels, serviced apartments, shopping malls and integrated developments.

With a proven track record of over 55 years of experience in real estate development, investment and management, the Group has developed over 46,000 homes and owns over 24 million square feet of gross floor area in residential, commercial and hospitality assets globally. Along with its London-based hotel arm, Millennium & Copthorne Hotels Limited (M&C), the Group has 156 hotels and 45,000 rooms worldwide, many in key gateway cities.